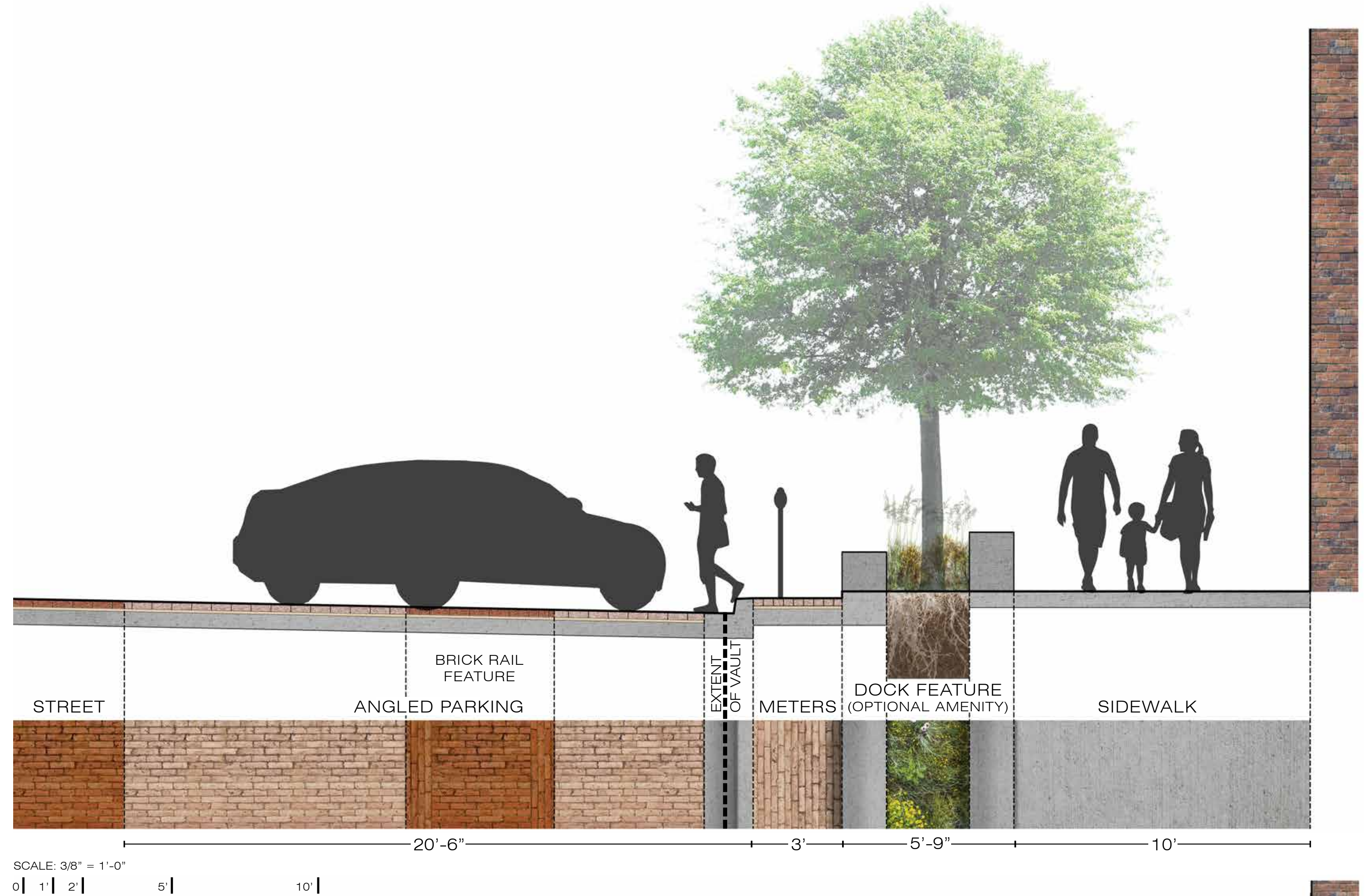


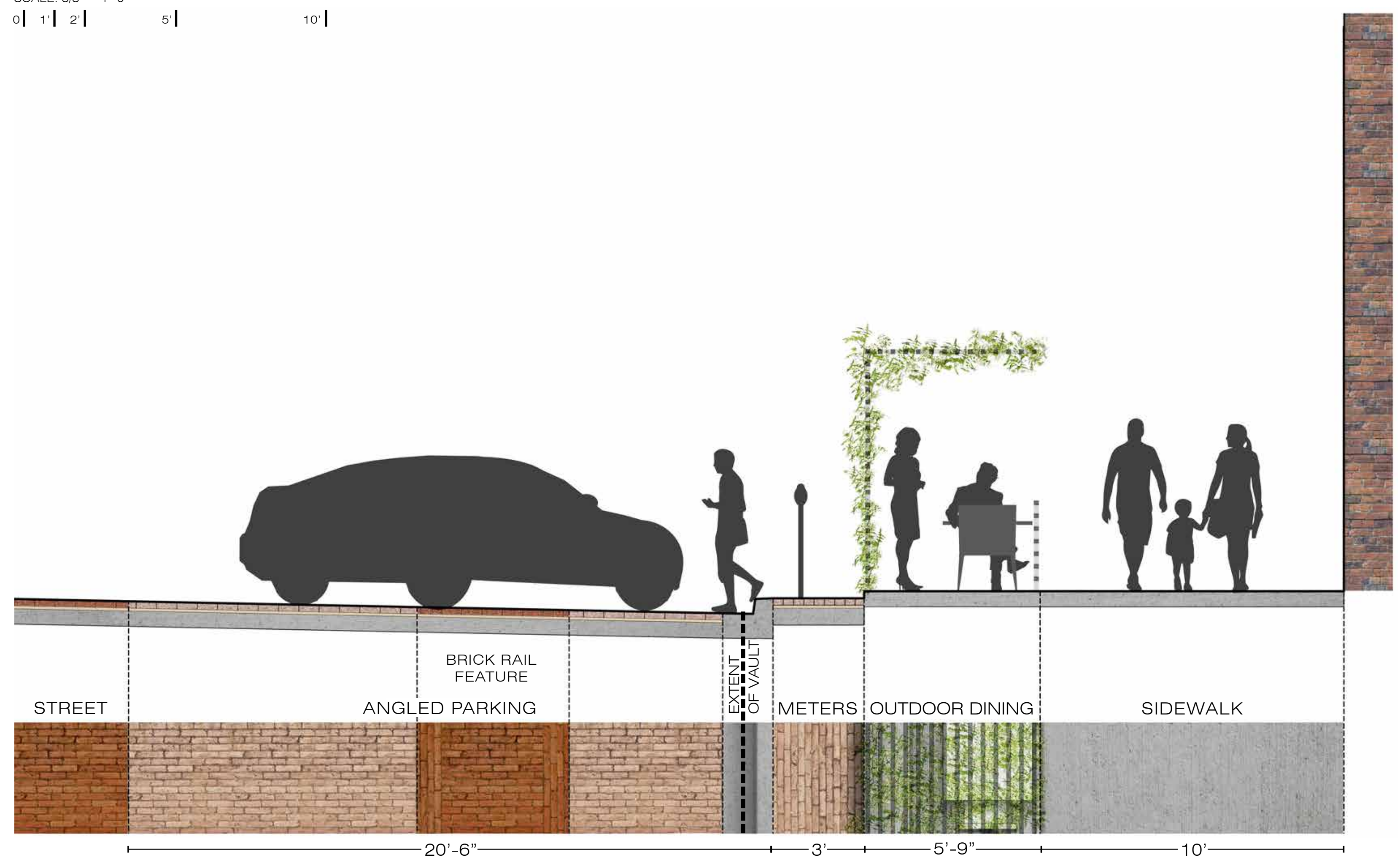
ANGLE PARKING  
WITH DOCK FEATURE  
JONES BETWEEN 11TH & 12TH STREETS

SECTION 1.1



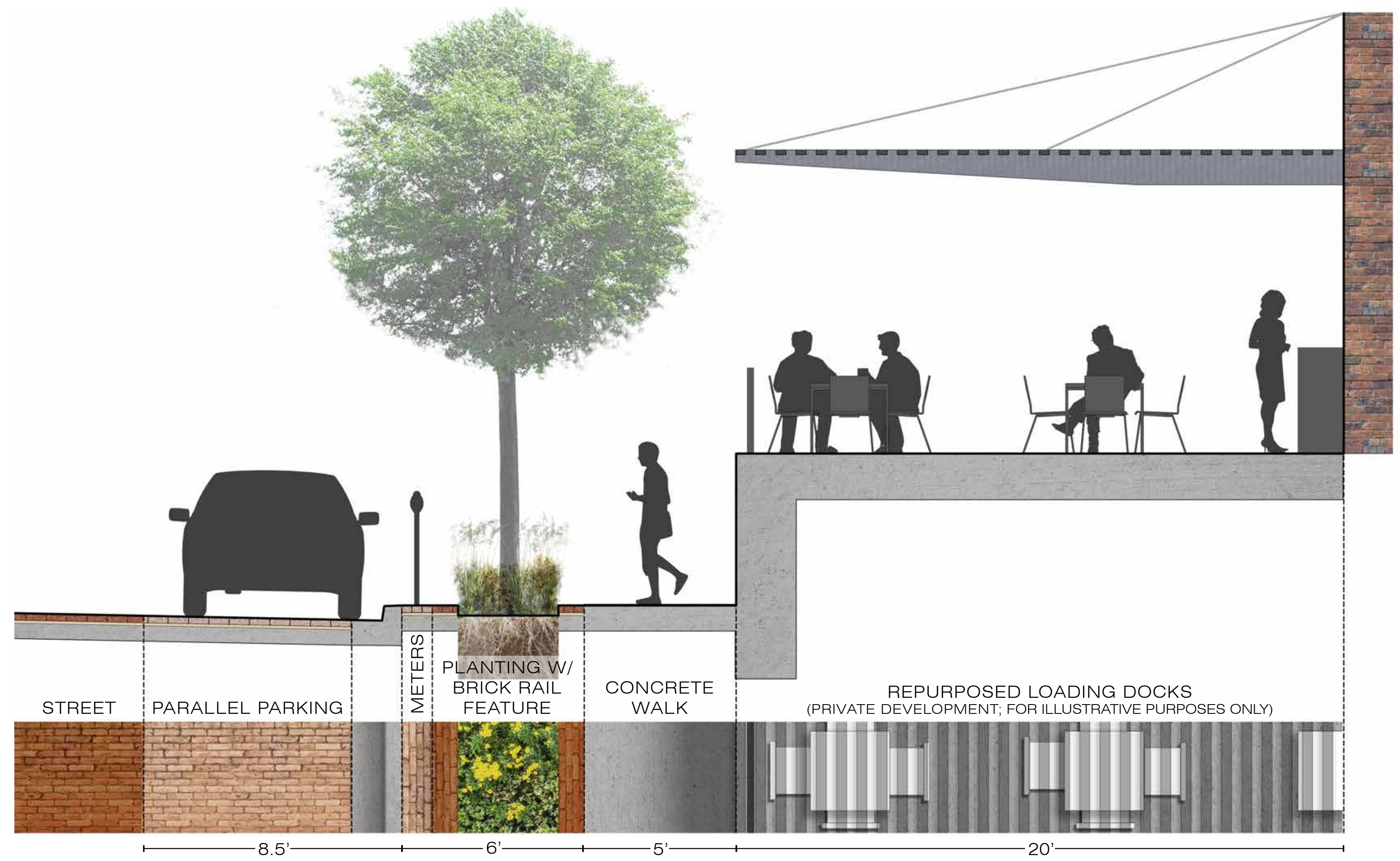
ANGLE PARKING  
WITH OUTDOOR DINING  
JONES BETWEEN 11TH & 12TH STREETS

SECTION 2.1



REPURPOSED  
LOADING DOCK  
JONES BETWEEN 12TH & 13TH STREETS

SECTION 3.1



NOTE: SECTION LOCATIONS INDICATED ON PLANS. OPTIONAL AMENITIES TO BE INCLUDED WITH PRIVATE FUNDS. POTENTIAL FUTURE PRIVATE DEVELOPMENT ON REPURPOSED LOADING DOCKS SHOWN FOR ILLUSTRATIVE PURPOSES ONLY.

# STREETSCAPE SECTIONS

## ANGLE PARKING

JONES STREET OPEN HOUSE | SEPTEMBER 12, 2017



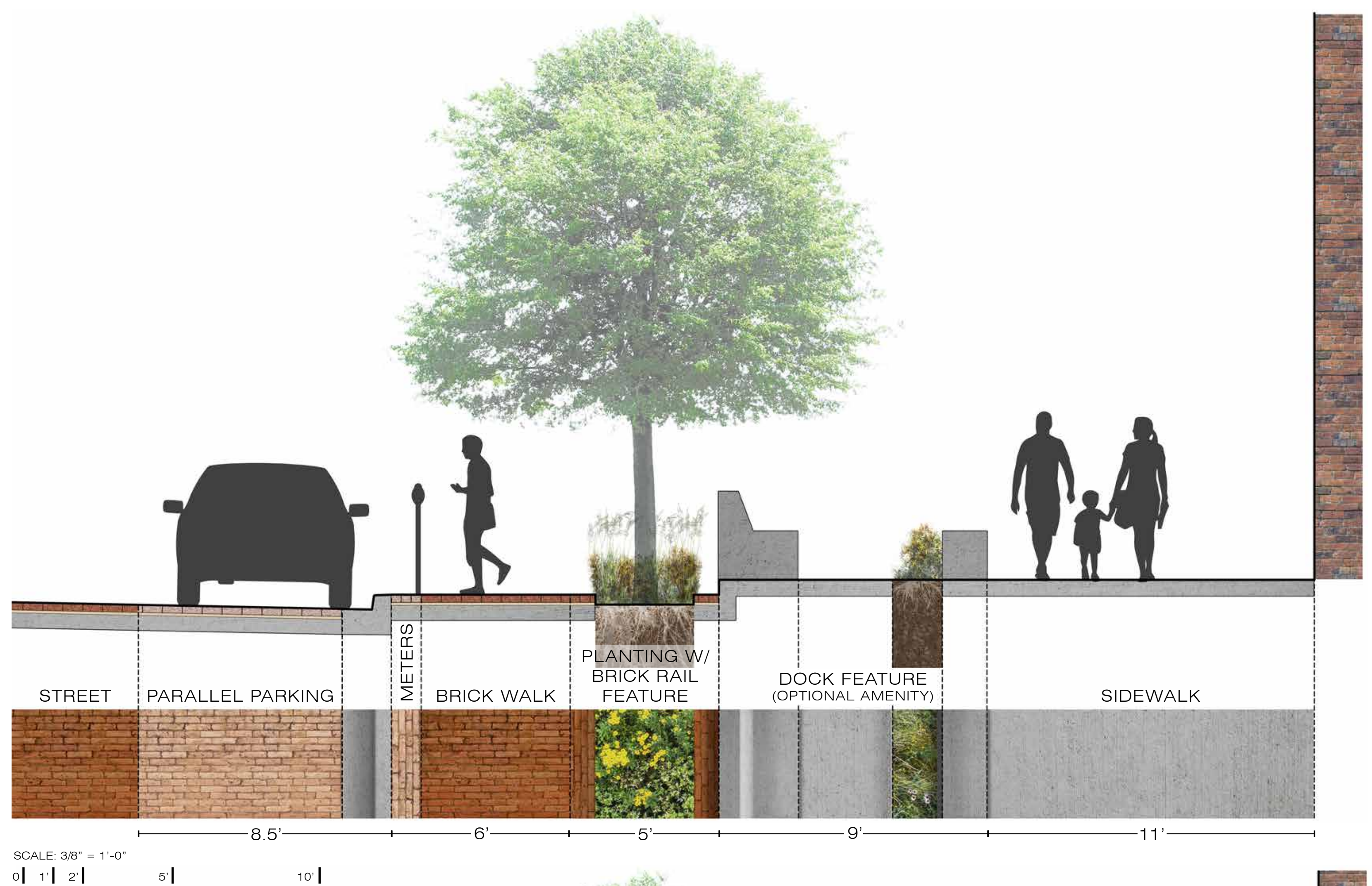
studioINSITE





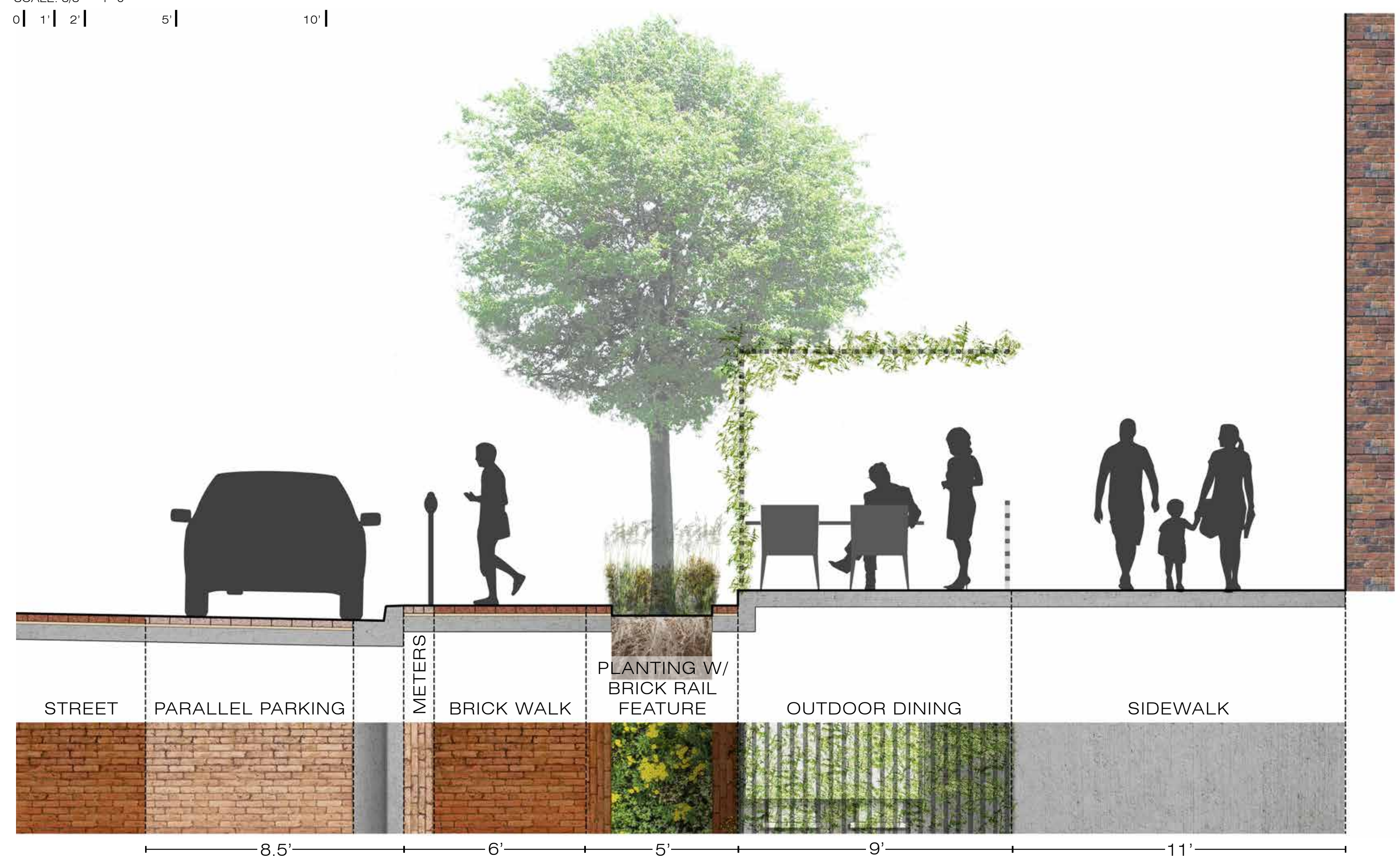
PARALLEL PARKING  
WITH DOCK FEATURE  
JONES BETWEEN 11TH & 12TH STREETS

SECTION 1.2



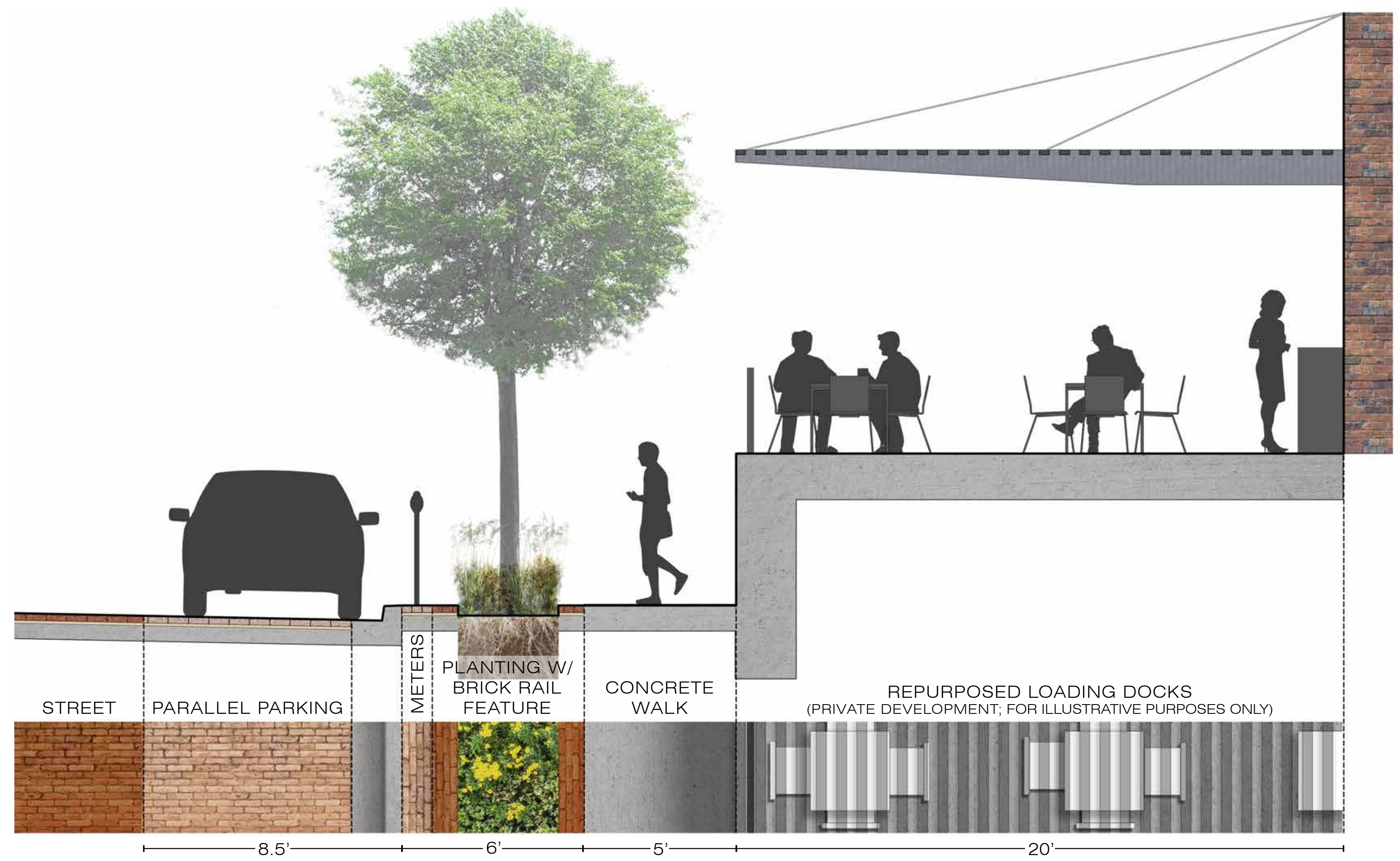
PARALLEL PARKING  
WITH OUTDOOR DINING  
JONES BETWEEN 11TH & 12TH STREETS

SECTION 2.2



REPURPOSED  
LOADING DOCK  
JONES BETWEEN 12TH & 13TH STREETS

SECTION 3.2



NOTE: SECTION LOCATIONS INDICATED ON PLANS. OPTIONAL AMENITIES TO BE INCLUDED WITH PRIVATE FUNDS. POTENTIAL FUTURE PRIVATE DEVELOPMENT ON REPURPOSED LOADING DOCKS SHOWN FOR ILLUSTRATIVE PURPOSES ONLY.

# STREETSCAPE SECTIONS PARALLEL PARKING

JONES STREET OPEN HOUSE | SEPTEMBER 12, 2017



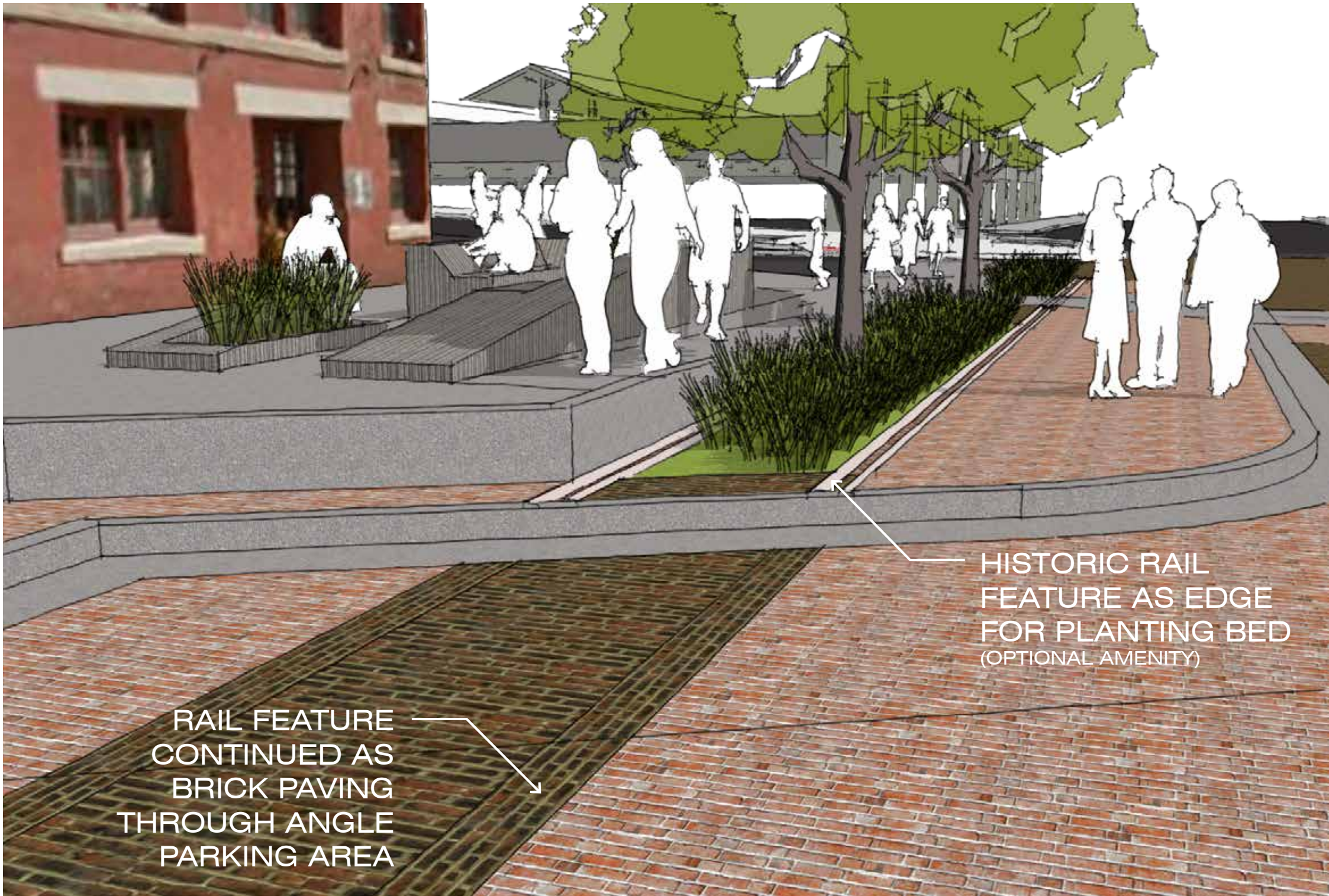
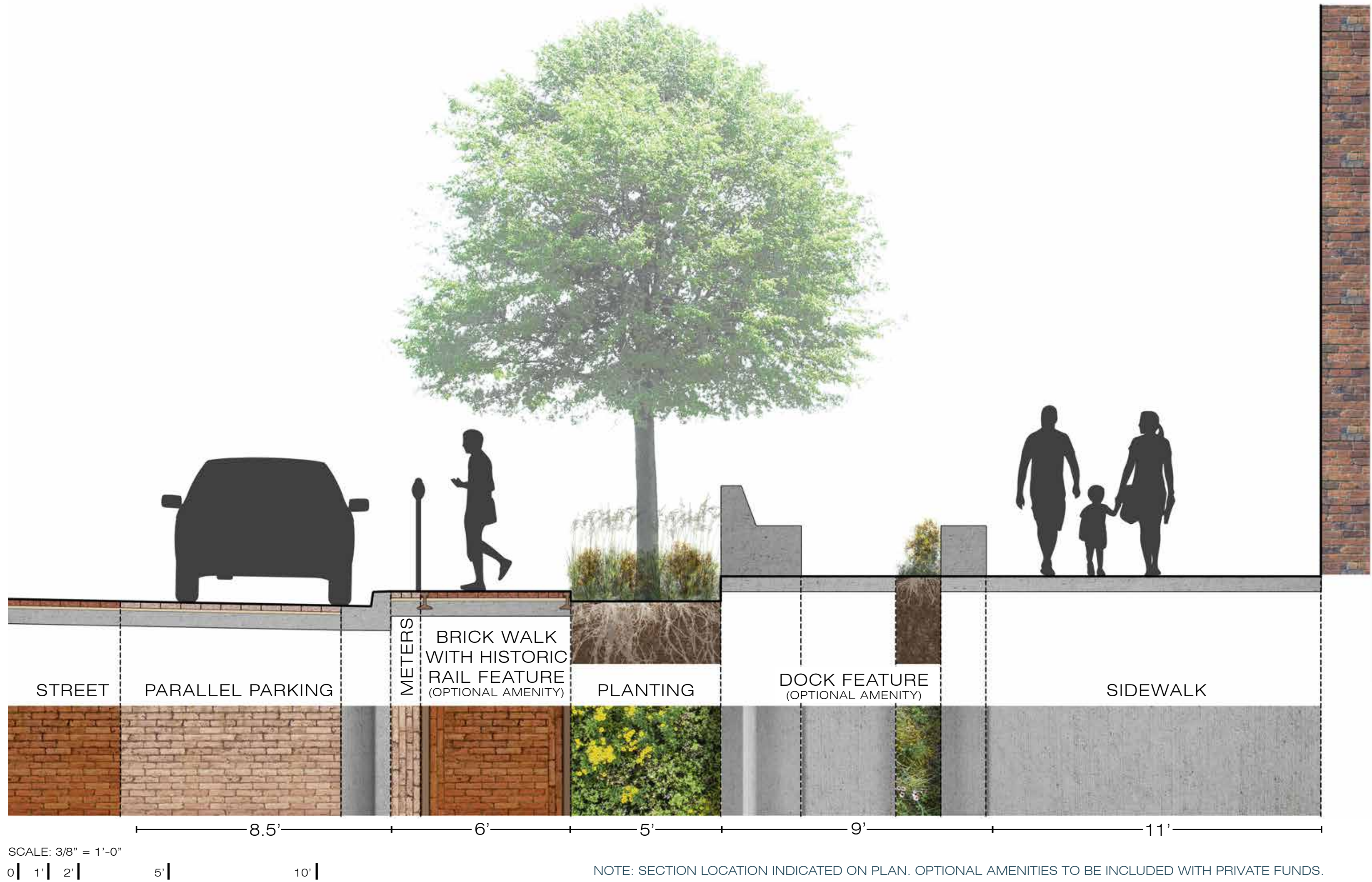
studioINSITE



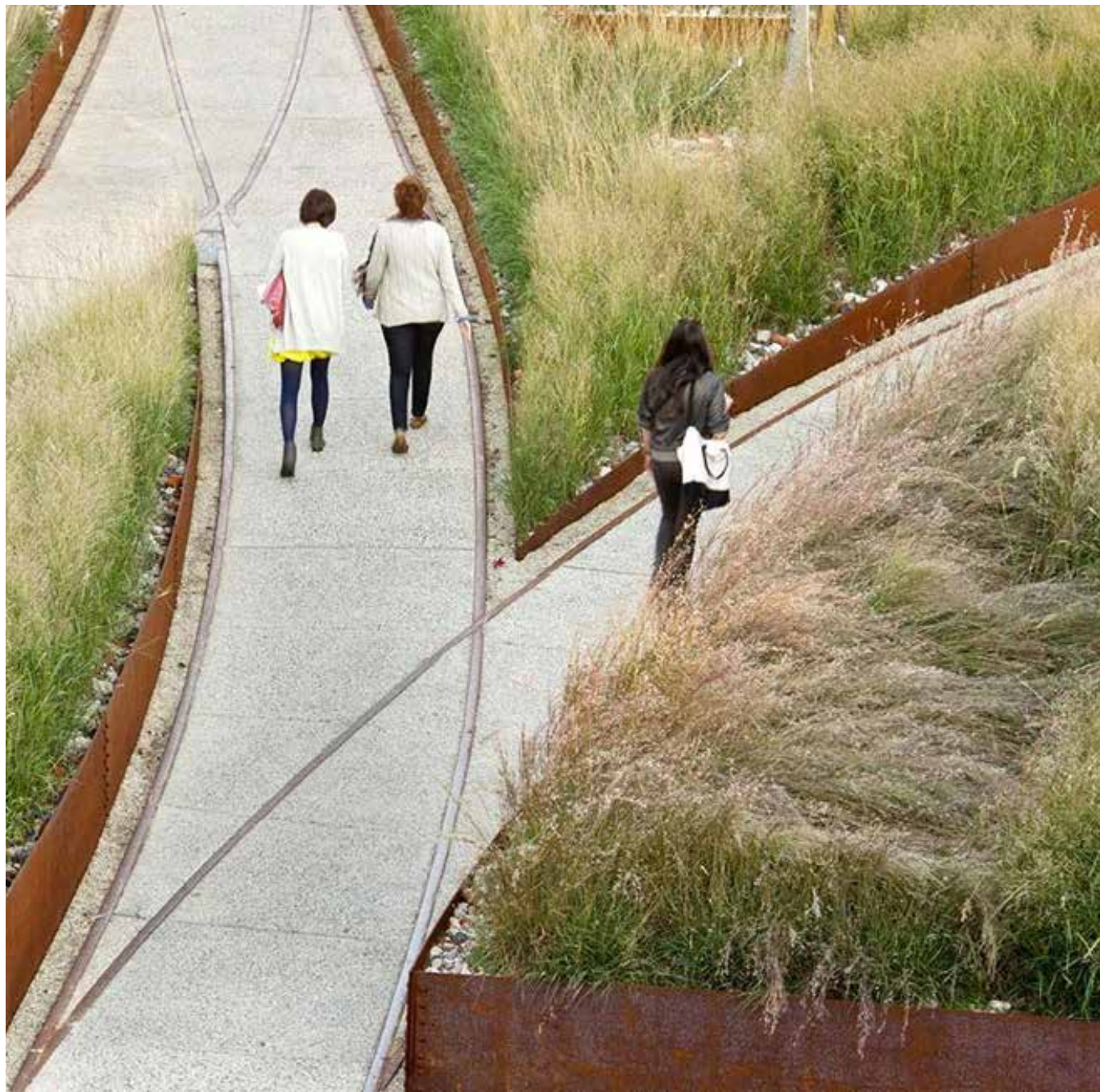
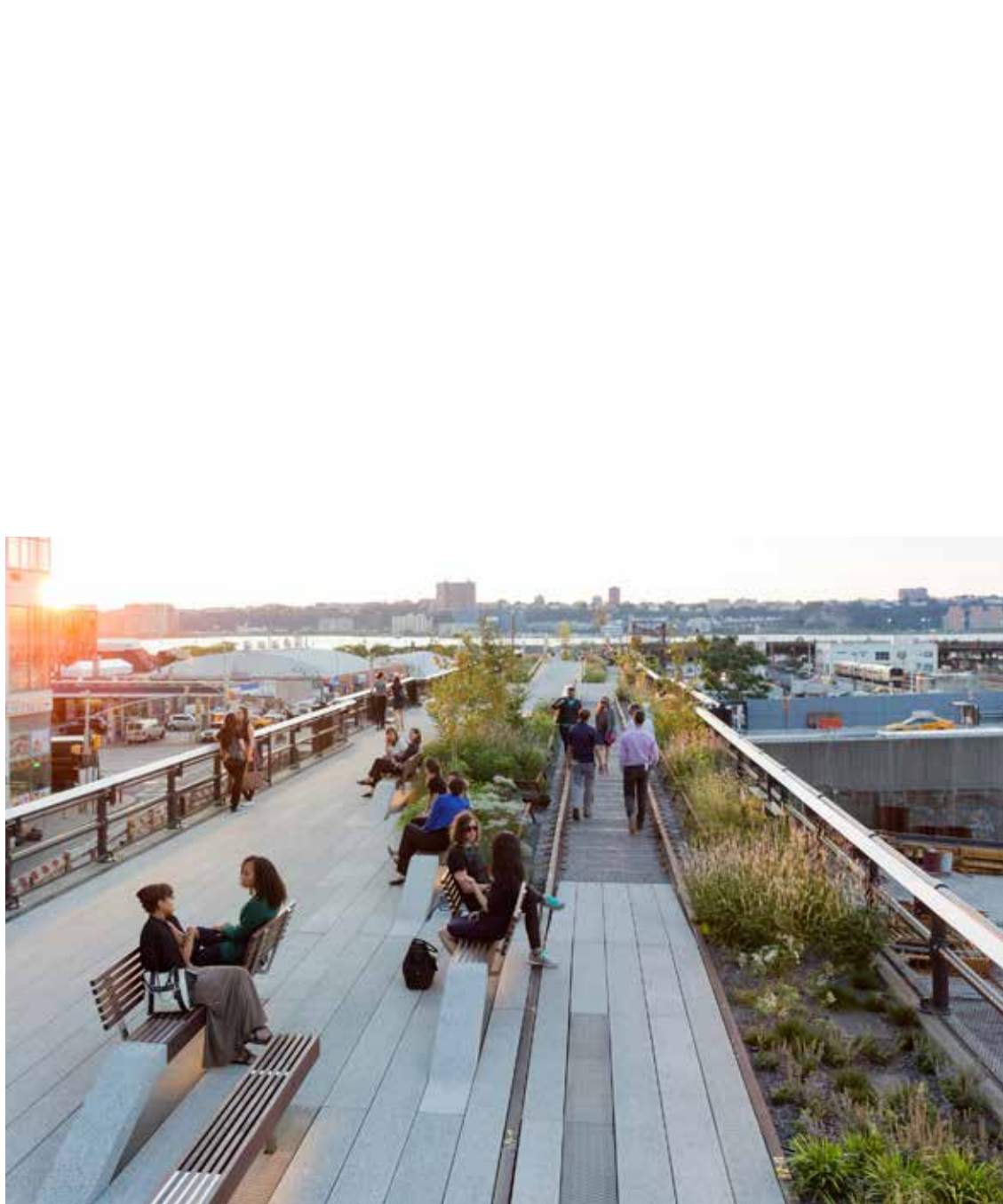


SINGLE RAIL FEATURE  
WITH PARALLEL PARKING  
JONES BETWEEN 11TH & 12TH STREETS

SECTION 1.3



DOUBLE RAIL PLANTING FEATURE WITH ANGLE PARKING



Historic rail feature examples around the world, clockwise from top left: The High Line, New York City, NY; The Navy Yard, Philadelphia, PA; Millwork District, Dubuque, IA; The Goods Line, Sydney, Australia; Hunters Point, New York City, NY.

OPTIONAL AMENITIES  
HISTORIC RAIL FEATURE OPTIONS

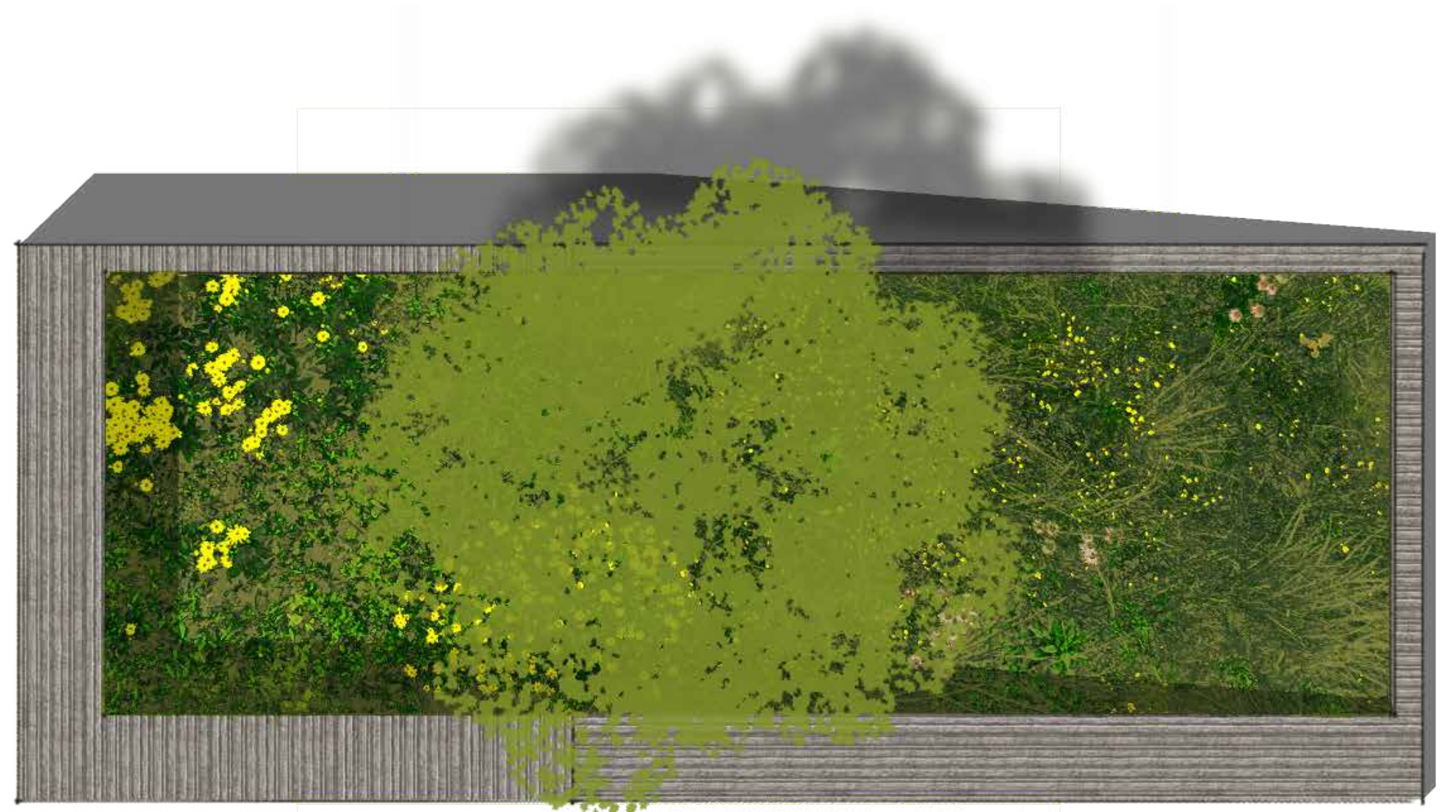
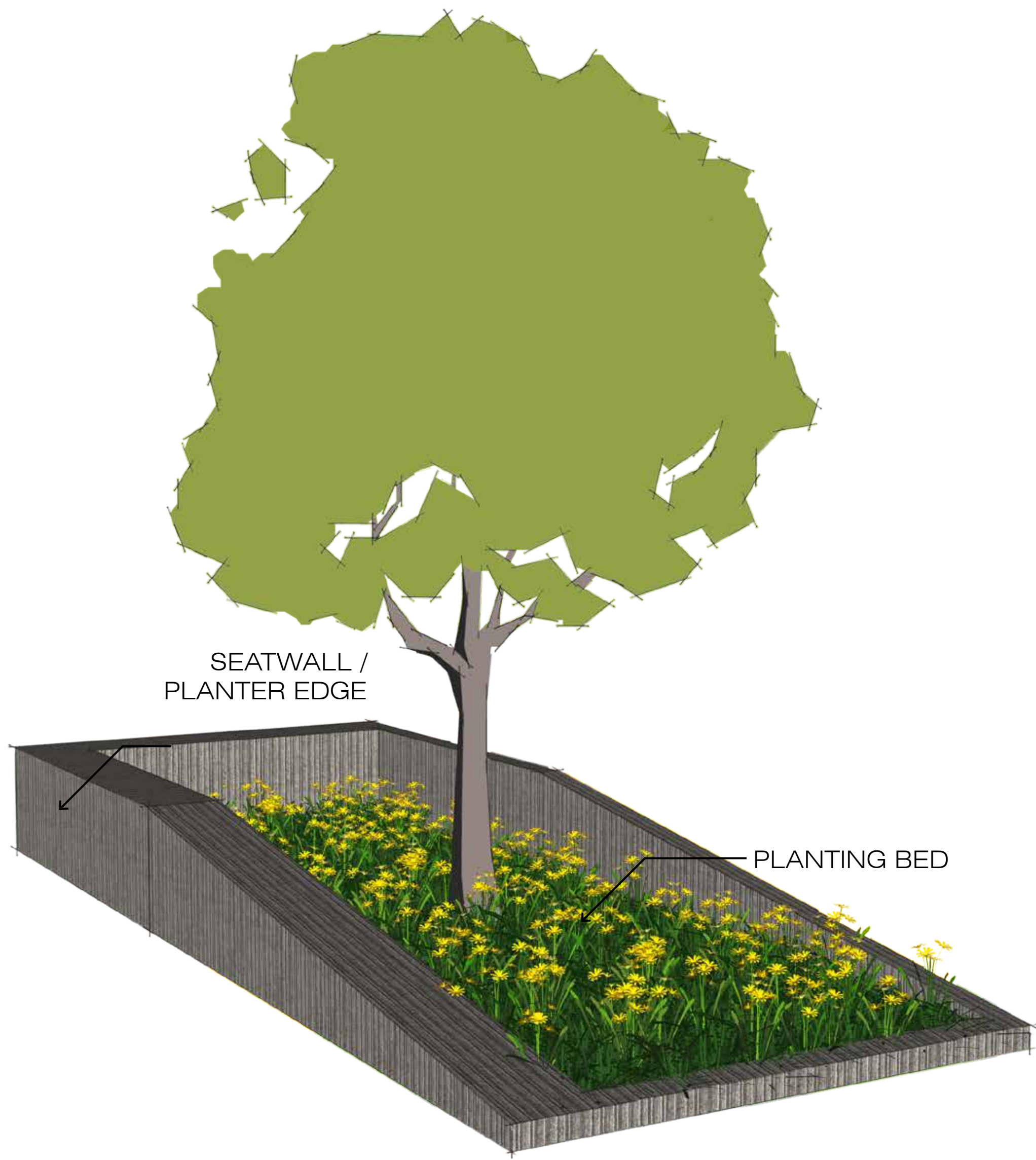
JONES STREET OPEN HOUSE | SEPTEMBER 12, 2017



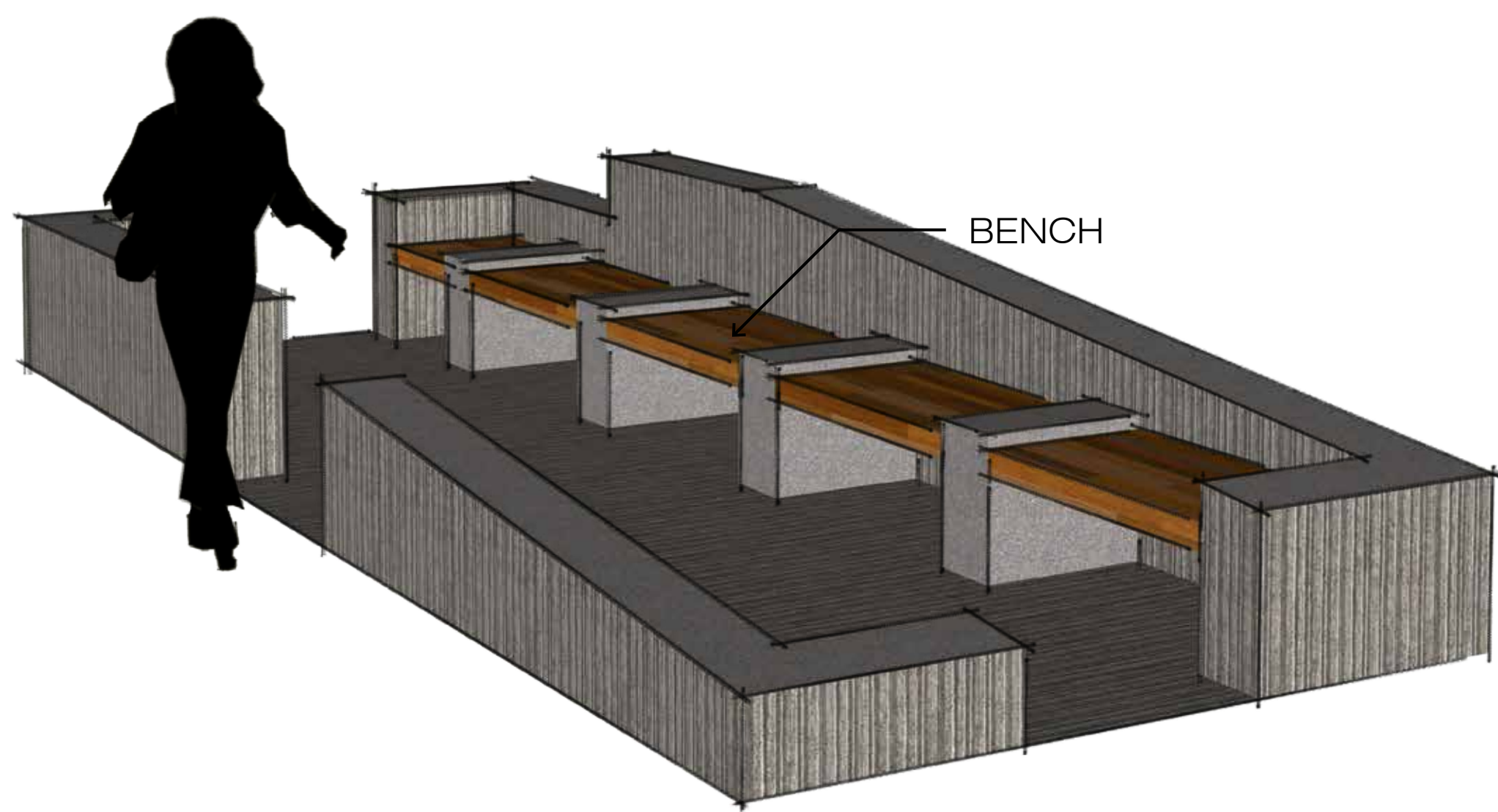
studioINSITE



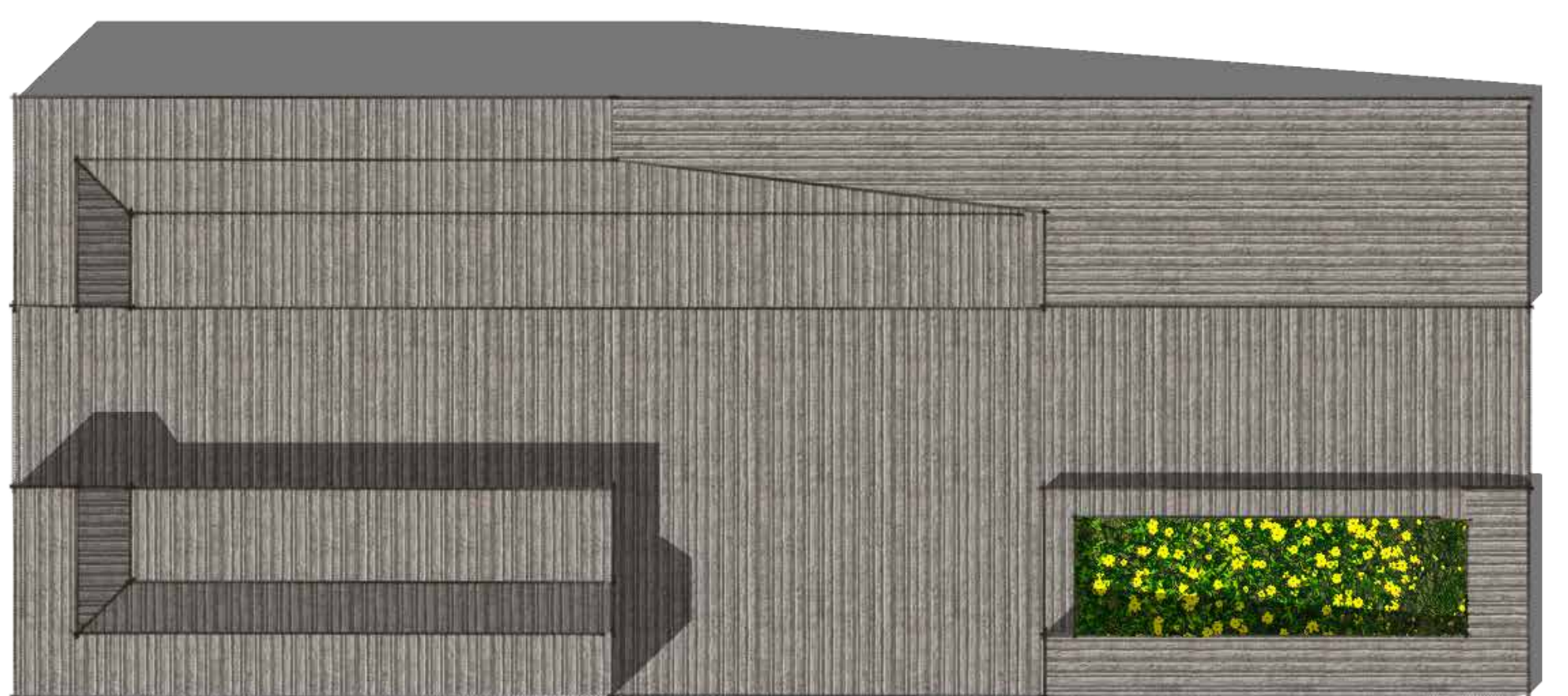
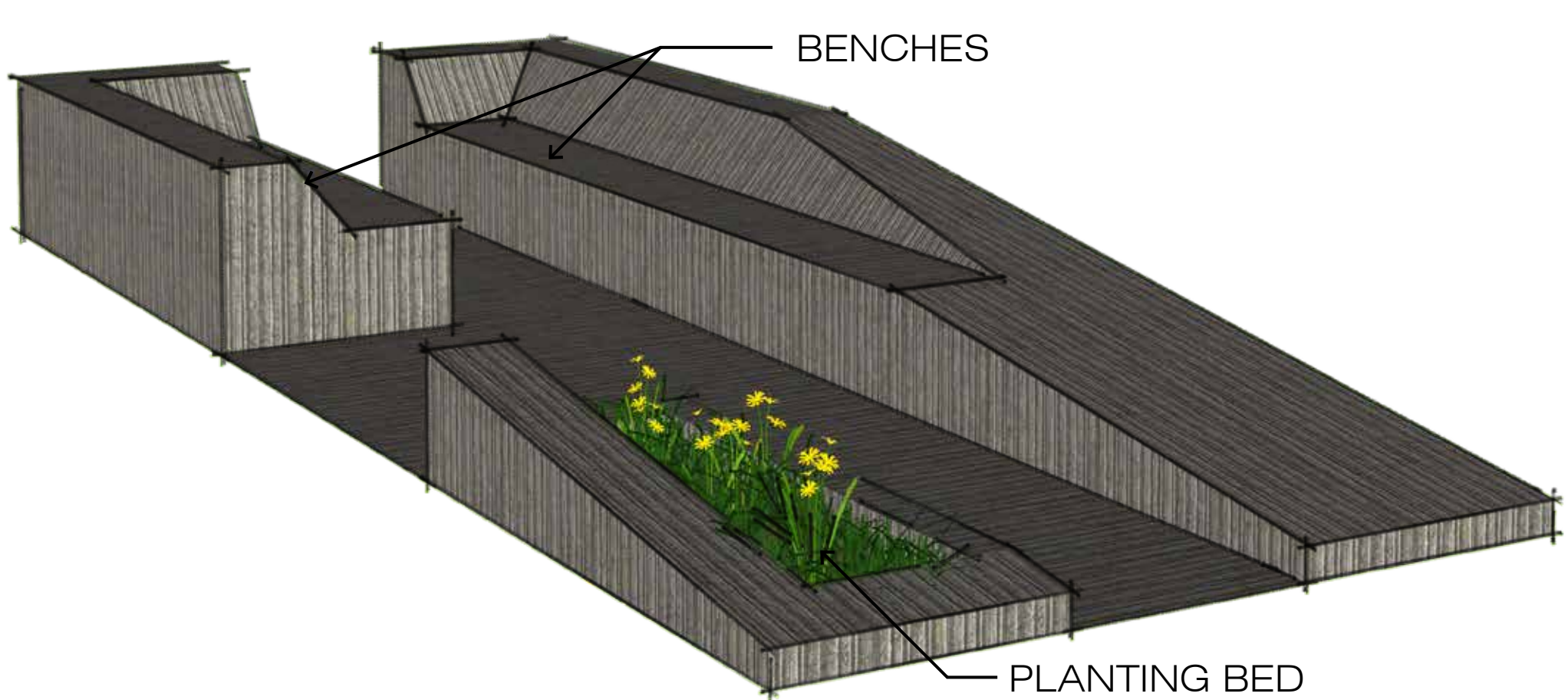




OPTION 1: PLANTING



OPTION 2: SEATING



OPTION 3: COMBINATION

NOTE: OPTIONAL AMENITIES TO BE INCLUDED WITH PRIVATE FUNDS. FEATURES WILL INCLUDE SKATE DETERRENT.



EXISTING HISTORIC DOCKS ON JONES ST. BETWEEN 11TH & 12TH

## OPTIONAL AMENITIES RECONSTRUCTED DOCK FEATURE OPTIONS

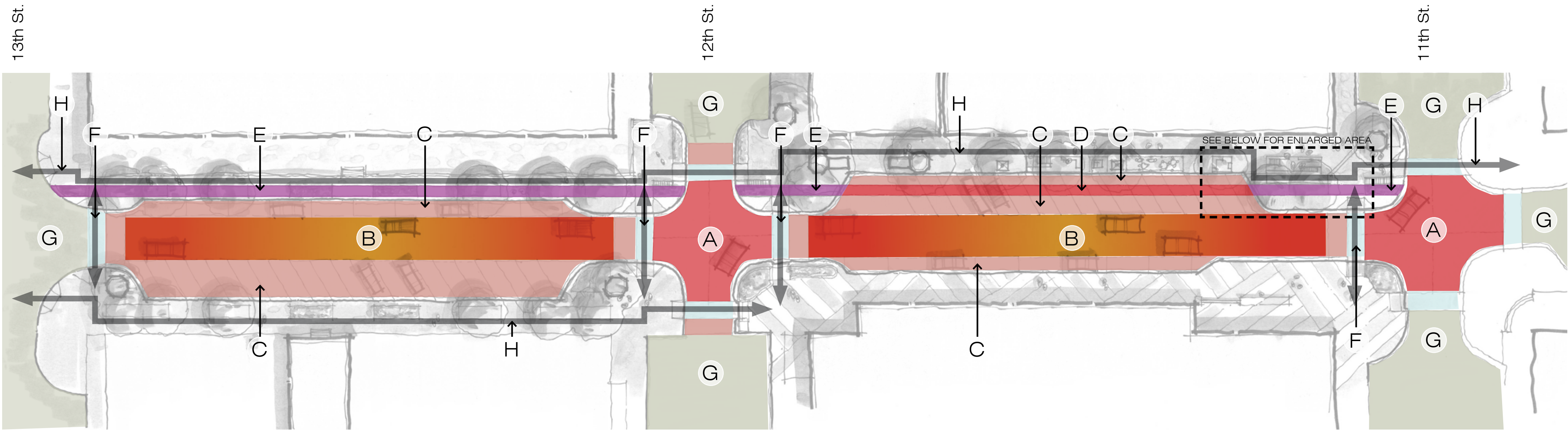
JONES STREET OPEN HOUSE | SEPTEMBER 12, 2017



studioINSITE



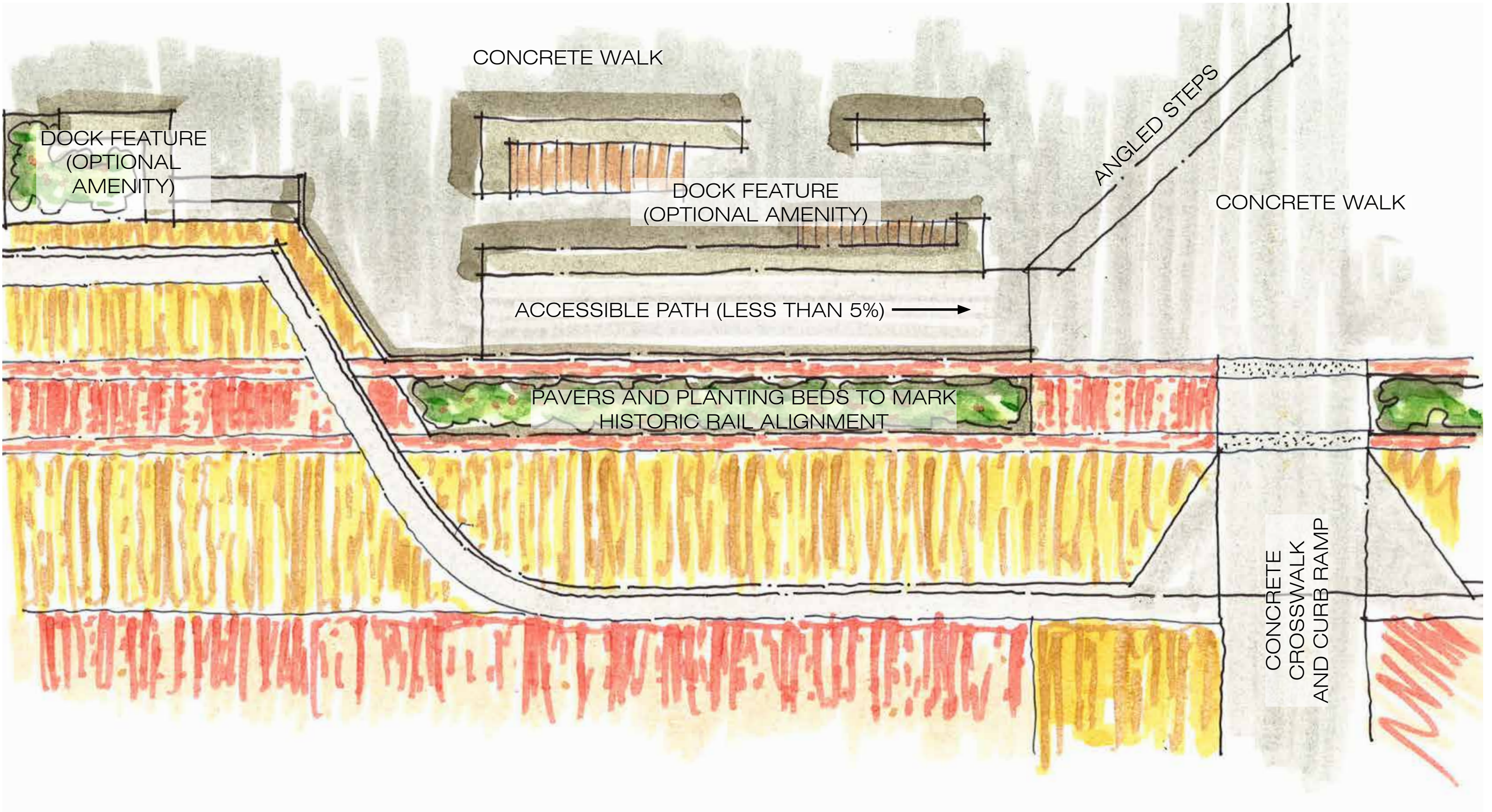




CONCEPT PAVER DIAGRAM

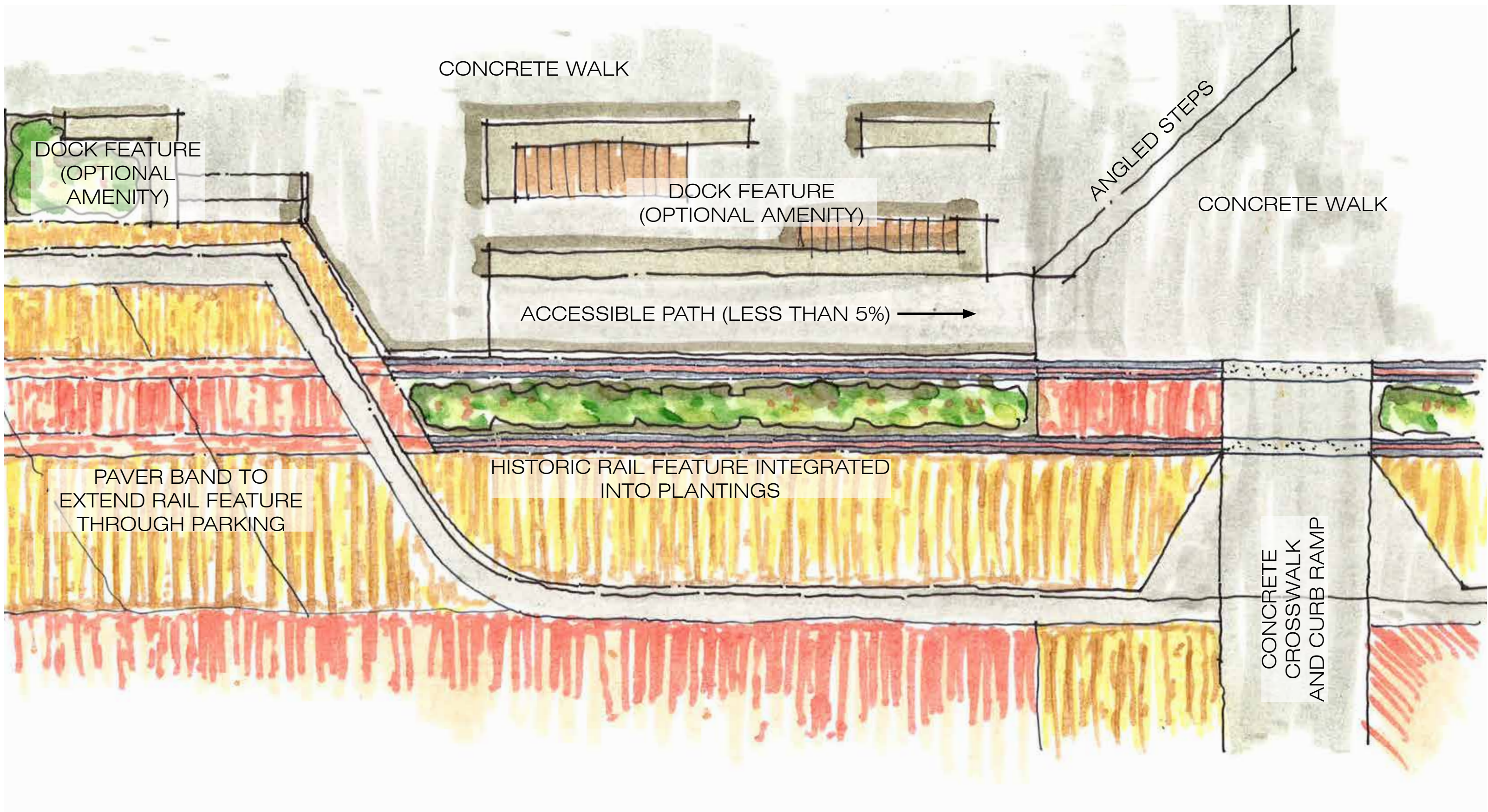
LEGEND

- (A) INTERSECTION - Mix of reclaimed pavers and new pavers
- (B) DRIVE LANE - All new pavers to match existing
- (C) PARKING AND CROSSWALK BUFFER - All new pavers to maximize accessibility; color to match existing sandstone pavers
- (D) RAIL FEATURE - All new pavers to match existing with accent soldier course (see diagrams below)
- (E) RAIL LANDSCAPE FEATURE - Mix of pavers and landscape areas (see diagrams below)
- (F) CROSSWALK - Cast-in-place concrete walk to maximize accessibility
- (G) EXISTING PAVEMENT - To be restored as needed
- (H) CONCRETE WALKS - ADA accessible route



BRICK 'RAIL' FEATURE

Scale: 1" = 5'-0"  
0 | 2.5 | 5 | 10 | 15 |

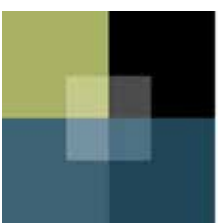


HISTORIC RAIL FEATURE (OPTIONAL AMENITY)

Scale: 1" = 5'-0"  
0 | 2.5 | 5 | 10 | 15 |

PAVER DIAGRAM

JONES STREET OPEN HOUSE | SEPTEMBER 12, 2017



studioINSITE





RECONSTRUCTED  
DOCK FEATURE  
(OPTIONAL AMENITY)

ANGLE PARKING

TREE GRATE



PLANTING BEDS

PLANTING BED

BRICK 'RAIL'  
FEATURE

ETCHED  
CONCRETE  
'RAIL' FEATURE

ACCESSIBLE  
CONCRETE  
CROSSWALK

RECONSTRUCTED  
DOCK FEATURE  
(OPTIONAL AMENITY)



RECONSTRUCTED  
DOCK FEATURE  
(OPTIONAL AMENITY)



NOTE: OPTIONAL AMENITIES TO BE INCLUDED WITH PRIVATE FUNDS.

## VIEWS AT 11TH & JONES ST: ANGLED PARKING OPTION

JONES STREET OPEN HOUSE | SEPTEMBER 12, 2017







NOTE: OPTIONAL AMENITIES TO BE INCLUDED WITH PRIVATE FUNDS.

# **VIEWS AT 11TH & JONES ST:** **PARALLEL PARKING OPTION W/ RAIL**

JONES STREET OPEN HOUSE | SEPTEMBER 12, 2017



studioINSITE







REPURPOSED  
LOADING DOCKS  
(PRIVATE DEVELOPMENT;  
FOR ILLUSTRATIVE  
PURPOSES ONLY)

PLANTING BEDS  
HISTORIC RAIL  
FEATURE  
(OPTIONAL AMENITY)  
ACCESSIBLE  
CONCRETE  
CROSSWALK  
PARALLEL  
PARKING  
ANGLED  
PARKING



REPURPOSED  
LOADING DOCKS  
(PRIVATE DEVELOPMENT;  
FOR ILLUSTRATIVE  
PURPOSES ONLY)

HISTORIC RAIL  
FEATURE  
(OPTIONAL AMENITY)



PARALLEL  
PARKING

REPURPOSED  
LOADING DOCKS  
(PRIVATE DEVELOPMENT;  
FOR ILLUSTRATIVE  
PURPOSES ONLY)

HISTORIC RAIL  
FEATURE  
(OPTIONAL AMENITY)



REPURPOSED  
LOADING DOCKS  
(PRIVATE DEVELOPMENT;  
FOR ILLUSTRATIVE  
PURPOSES ONLY)

NOTE: OPTIONAL AMENITIES TO BE INCLUDED WITH PRIVATE FUNDS. POTENTIAL FUTURE PRIVATE DEVELOPMENT ON REPURPOSED LOADING DOCKS SHOWN FOR ILLUSTRATIVE PURPOSES ONLY.

# VIEWS OF JONES ST. 12TH-13TH

JONES STREET OPEN HOUSE | SEPTEMBER 12, 2017



studioINSITE







# JONES STREET HISTORIC IMAGES

JONES STREET OPEN HOUSE | SEPTEMBER 12, 2017



studioINSITE

