

Stakeholder Meeting | Tuesday, February 4th | 2:00-3:00 pm

## Welcome!

The purpose of the stakeholder meeting is to present the design and construction plan to reconstruct Pacific Street from 157th Street to 155th Street. The project will widen Pacific Street to provide a second eastbound left turn lane to northbound 156th Street. The second lane, however, will not be open to traffic until the 156th Street project is constructed.

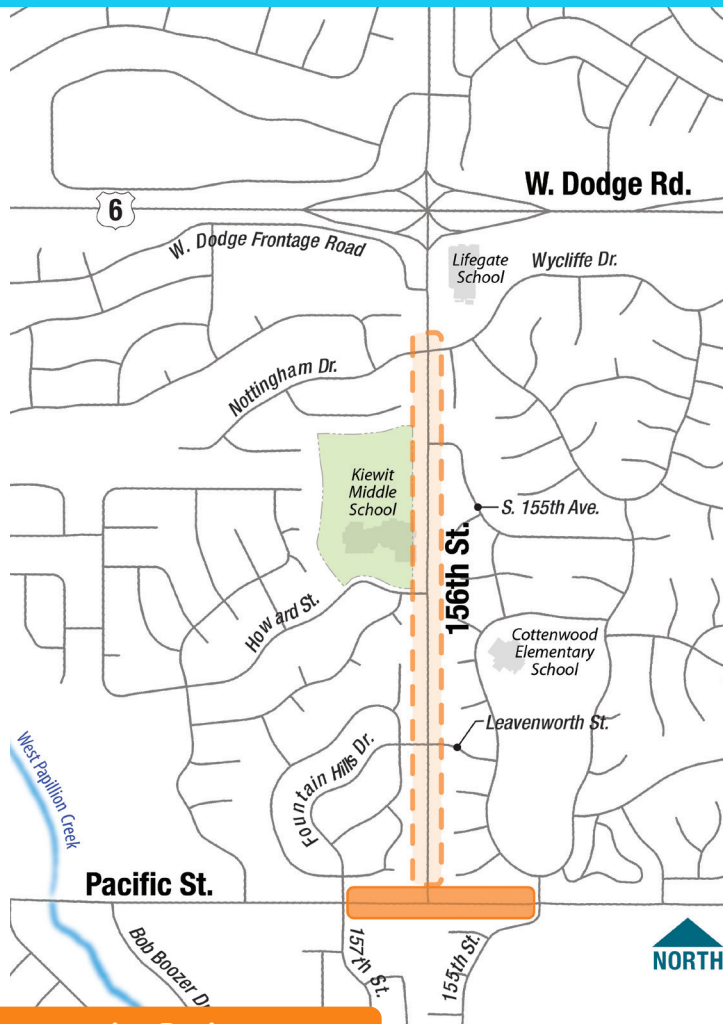
## Project Background

Pacific Street was scheduled to be widened as a part of the 156th Street project, Pacific Street to Wycliffe Drive. Due to the size and complexity of the 156th Street project, the Pacific Street portion has been separated out and is scheduled to be constructed as a standalone project during the summer of 2020.

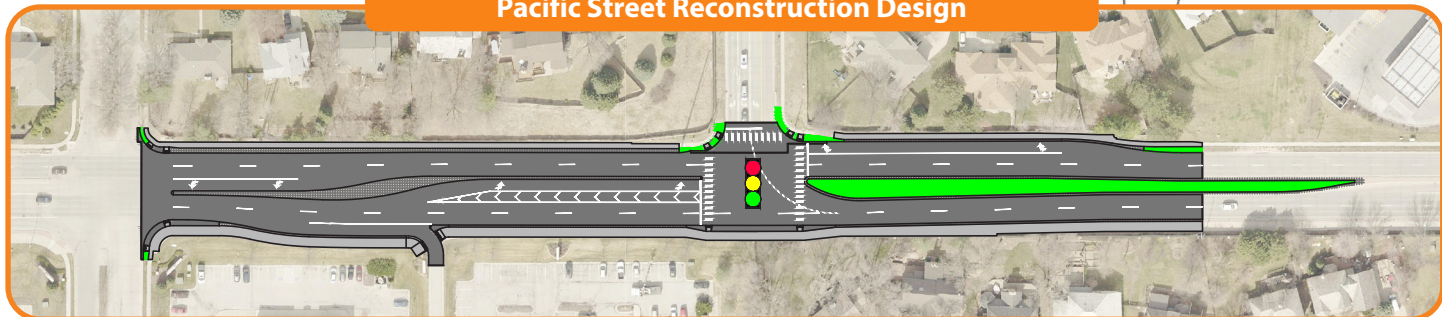
## Project Purpose

↔ Improve Capacity

⚠ Improve Safety



Pacific Street Reconstruction Design



**Current Daily Traffic**  
25,000 - 35,000 vehicles



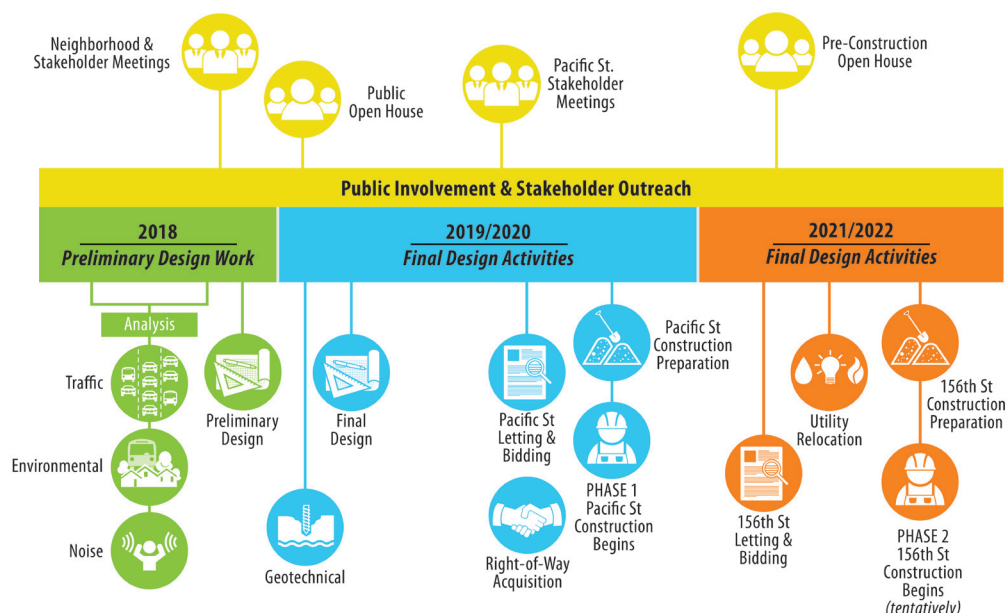
**Projected 2040 Traffic**  
31,000 - 44,000 vehicles



**Estimated Construction Cost**  
\$1.6 Million



# Project Schedule



## Construction Phasing

Pacific Street will be closed to all through traffic for this project. A full closure offers the following benefits to the public, the contractor, and the City:

**Safety** – A full closure eliminates the mix of construction vehicles and the traveling public. Eliminating this mix provides a safer work environment for the contractor and traveling public.

**Project Duration** – A full closure allows the contractor to complete the project in approximately half the time compared to a project phased to keep traffic open during construction.

**Laydown Area** – A full closure gives the contractor more room to complete the project and provides areas to store equipment and materials within the immediate work area.

**Quality** – A full closure produces a better quality product than a phased approach. This is because the contractor can pour

more continuous concrete without having to piece the project together in multiple smaller pours.

**Cost** – All of these factors mentioned result in significantly reduced project costs. In fact, the City has experienced project costs being cut in half when the Contractor is allowed to close the road to through traffic.

**Sequencing** – Other major transportation improvements are planned in west Omaha. Completing this intersection in advance of other improvements will alleviate future construction strain for area drivers.

## Typical Roadway Cross Section

### Pacific Street (Ultimate Configuration)



## Contact Us

There are several opportunities to provide input or ask questions of the project team:



Email us:  
info@KeepOmahaMoving.com



Call us:  
Omaha Public Works Department  
(402) 444-5220



You can stay informed about the project by signing up for notifications at  
[www.KeepOmahaMoving.com](http://www.KeepOmahaMoving.com)

