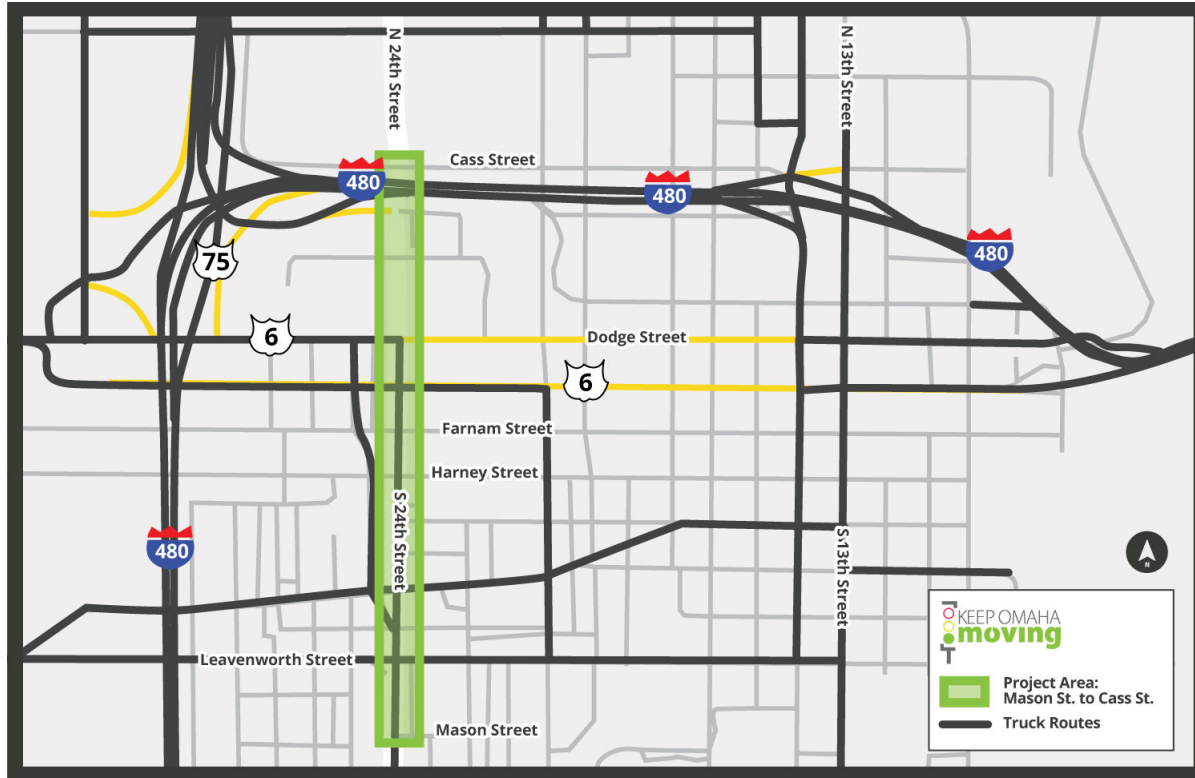


WELCOME!



24th Street Corridor Mason Street to Cass Street


The purpose of this meeting is to:

- Share the public feedback received during the data gathering phase
- Present corridor alternatives
- Receive additional public input



WELCOME!


On several slides of the virtual meeting presentation, you will find notes providing more detailed information. You can view them by hovering over the icon in the top left corner:




WHAT EXISTS TODAY

No-Build Alternative

- Retains the existing cross sections and operational features.
- One-way pairs
- 'Acceptable' pedestrian environment
- No bicycle amenities
- Limited on-street parking



24th Street (Existing)



24th Avenue (Existing)



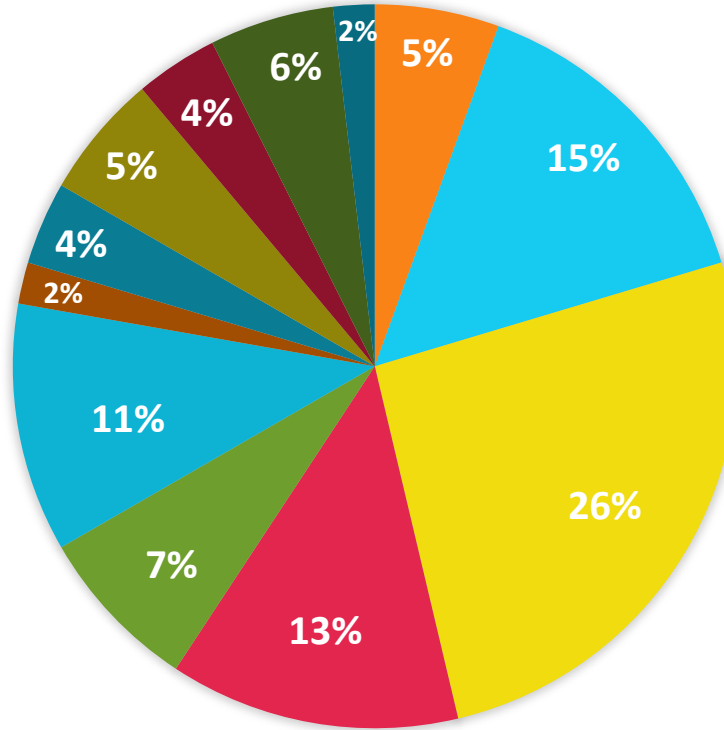
STUDY PURPOSE & GOALS

- Develop the ultimate street cross sections
- Enhance multimodal connectivity
- Balance future development / existing character
- Develop a more livable community



WHAT WE HEARD IN NOVEMBER

Vision for future of 24th Street

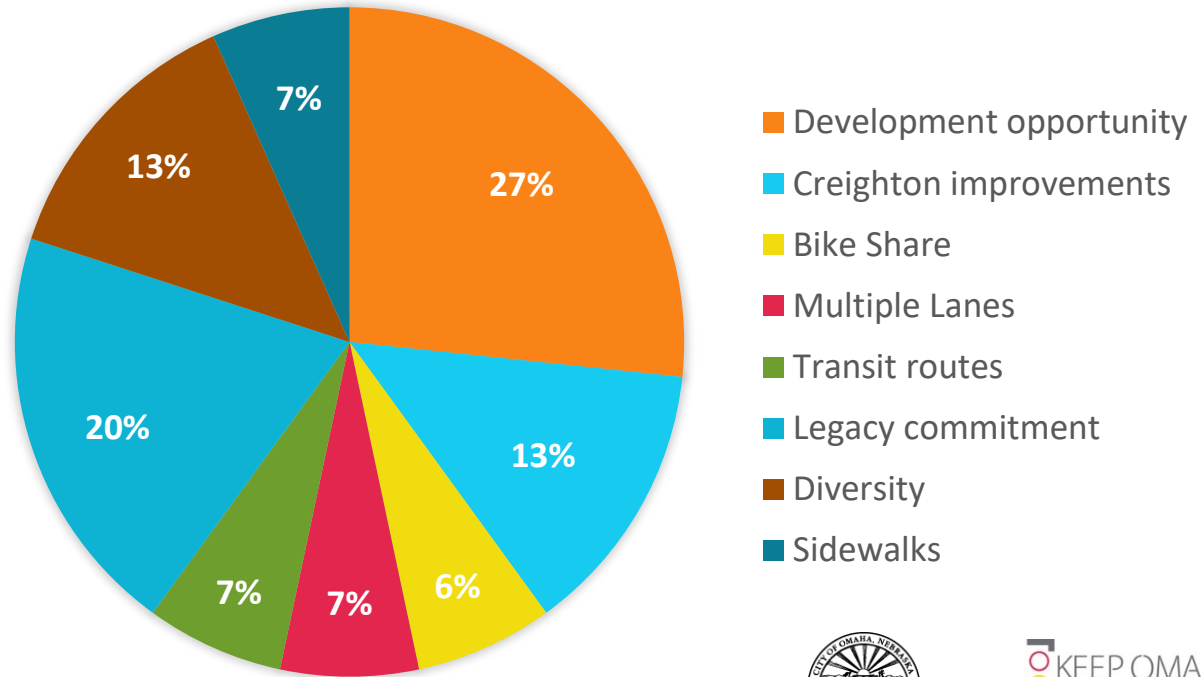


- Retain/Add Parking
- Add Bicycle Facilities
- Enhance Pedestrian Facilities
- Enhance Transit
- Two-Way Conversion
- Speed reduction
- Expand road
- Evaluate Truck Route
- More connected/unified
- Landon Court Extension
- Road Diet/Reduce Lanes
- No Bike Lanes



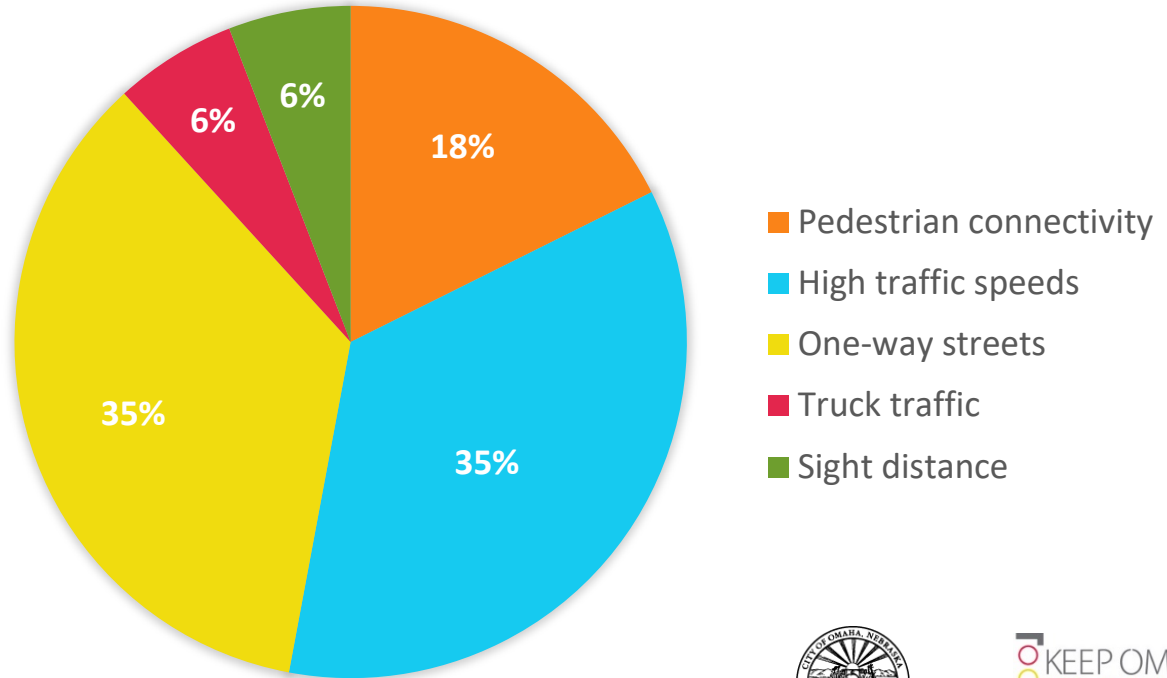
WHAT WE HEARD IN NOVEMBER

What is
working on
24th Street
today



WHAT WE HEARD IN NOVEMBER

What is not
working on
24th Street
today



PERFORMANCE MEASURES

GOAL	OBJECTIVE(S)	PERFORMANCE MEASURE(S)
Improve multimodal access/operation.	Increase bicycle and pedestrian amenities through complete streets practices/improve accessibility.	Net gain/loss in bicycle infrastructure. Improvement in bicycle connectivity. Increase/decrease in pedestrian level of comfort
	Improve transit amenities and operation/enhance transportation choices.	Improvements to route efficiency. Transit stop improvements.
	Repurpose excess roadway capacity.	Number of complete street features within right-of-way.
	Assess freight movements and truck routes.	Need for freight vehicles to support economic vitality of the corridor - evaluation of adjacent businesses.
Improve safety for all users.	Reduce number of accidents for vehicular and active transportation users.	Number of fatal and injury crashes. Number of bicycle and pedestrian collisions.
Speed reduction.	Reduce average travel speed along the corridor to improve multimodal comfort.	Reduction in 85th percentile speed
Improve/retain parking.	Establish proper parking conditions and enhance current parking amenities.	Net gain/loss in conforming parking stalls



WE WANT YOUR INPUT



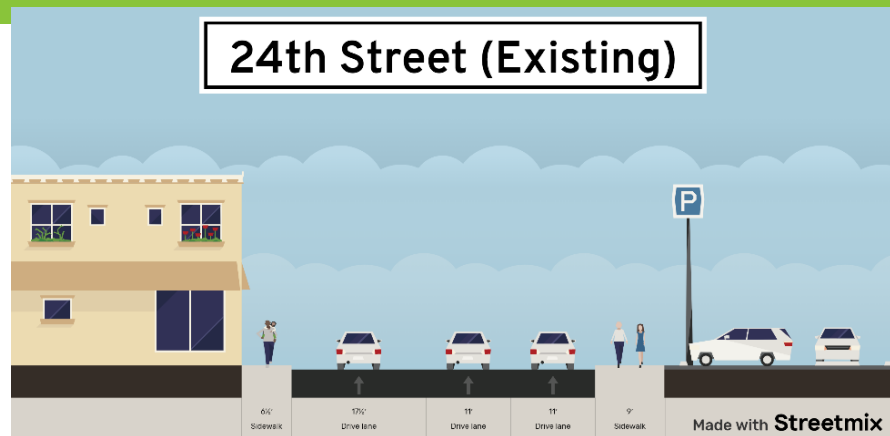
Review the following alternatives for the corridor and then complete the survey!



WHAT EXISTS TODAY

No-Build Alternative

- Retains the existing cross sections and operational features.
- One-way pairs
- 'Acceptable' pedestrian environment
- No bicycle amenities
- Limited on-street parking

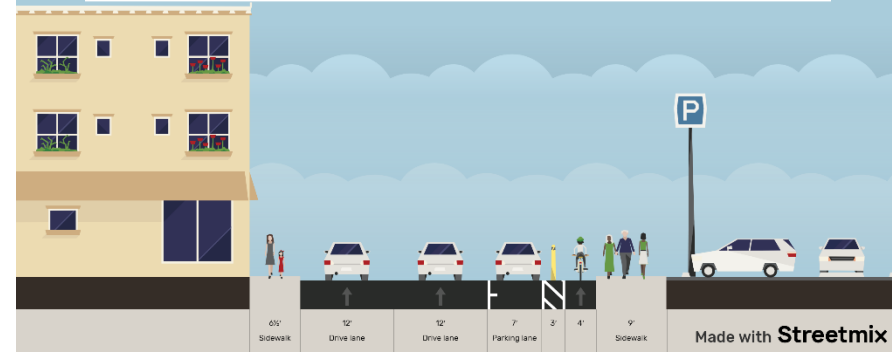


ALTERNATIVE #1

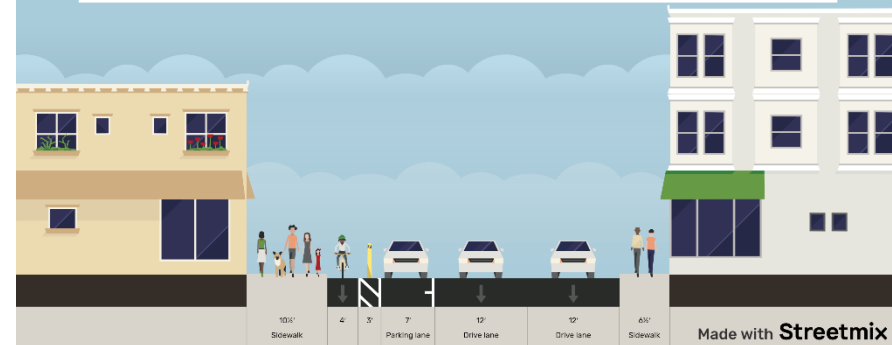
One-Way Road Diet

- Retain one-way pair
- Repurpose existing right-of-way to add modal amenities
 - Parking-protected bicycle lanes
- Added space for on-street parking
- Landon Court Extension

24th Street - One-Way Road Diet



24th Avenue - One-way Road Diet





ALTERNATIVE #1

One-Way Road Diet

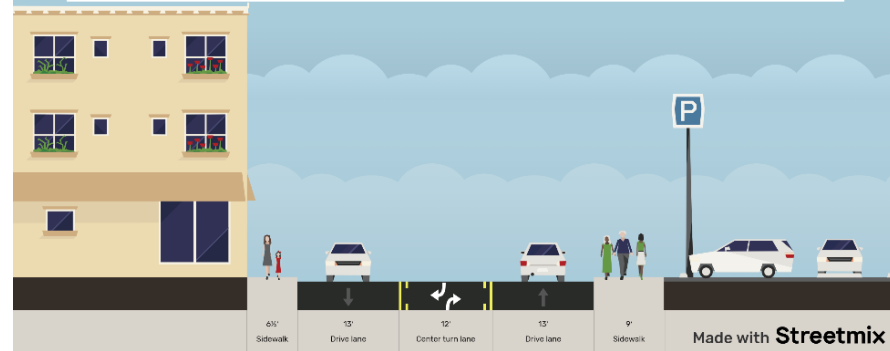


ALTERNATIVE #2

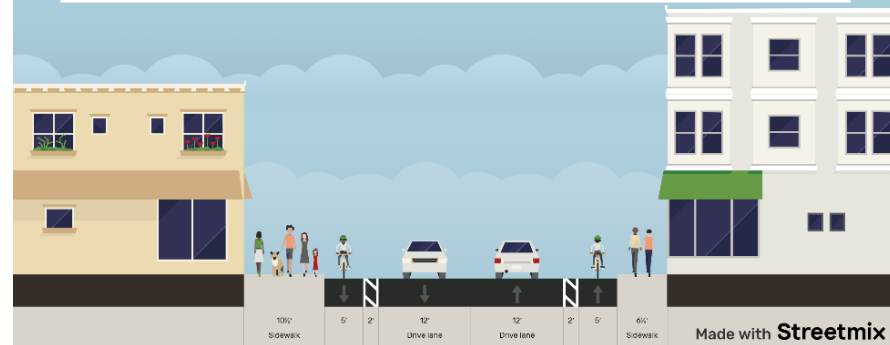
Full Two-Way Conversion

- Convert to two-way operation on both 24th Street and 25th Street/24th Avenue
- Consolidate bicycle operations on 25th Street/24th Avenue
 - Buffered bicycle lanes
- Consolidate Transit operations on 24th Street

24th Street - Two-Way Conversion

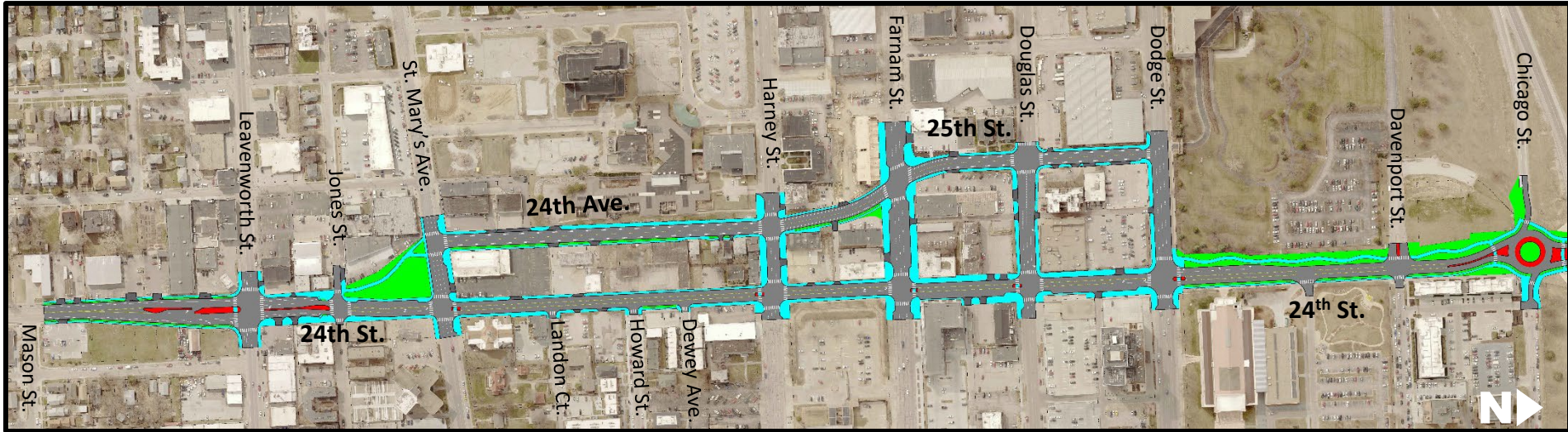


24th Avenue - Two-way Conversion



ALTERNATIVE #2

Full Two-way Conversion

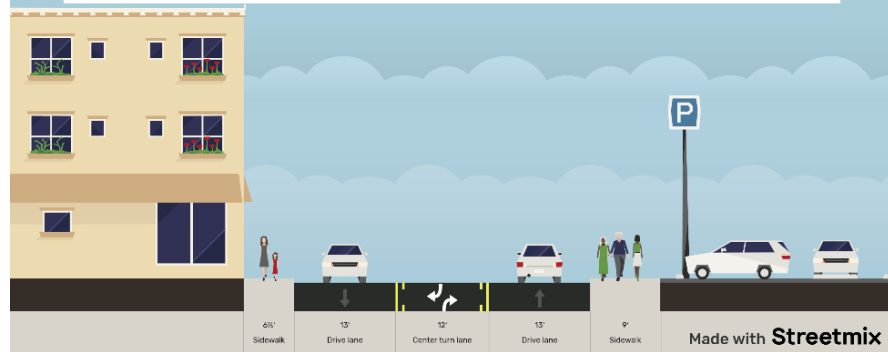


ALTERNATIVE #3

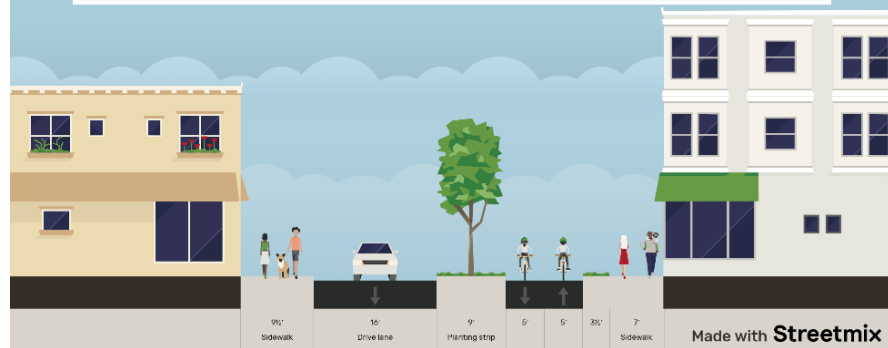
Hybrid Operation

- Two-way operation on 24th Street
 - Consolidated transit/vehicular operations
- One-way southbound on 25th Street/24th Avenue
 - Enhanced pedestrian/bicycle environment
 - Local access for vehicles

24th Street - Two-Way Conversion

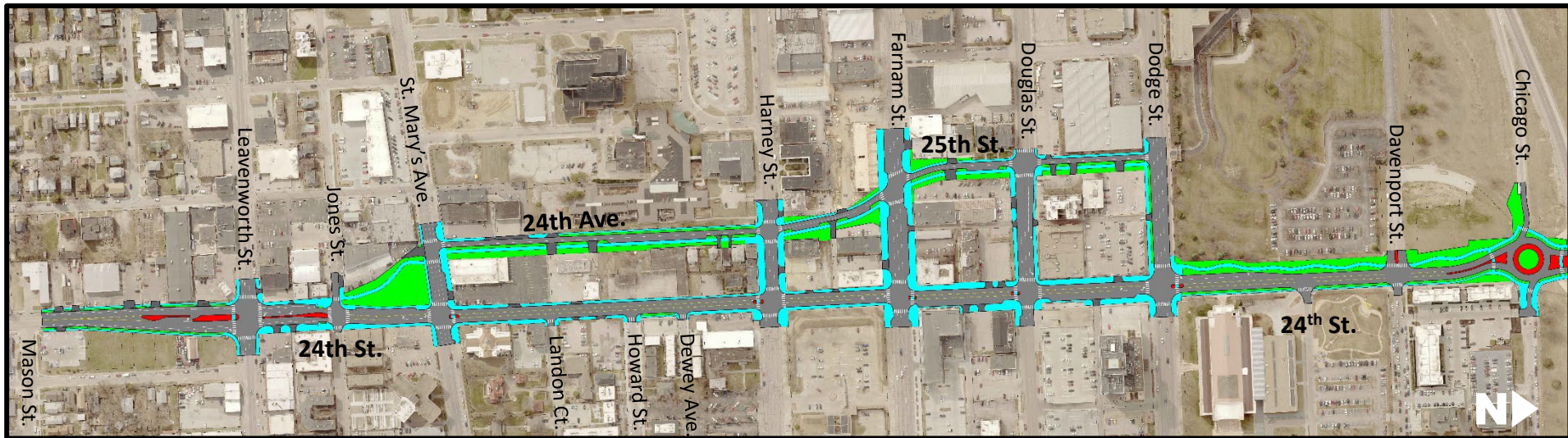


24th Avenue - One-Way (SB Only)



ALTERNATIVE #3

Hybrid Operation

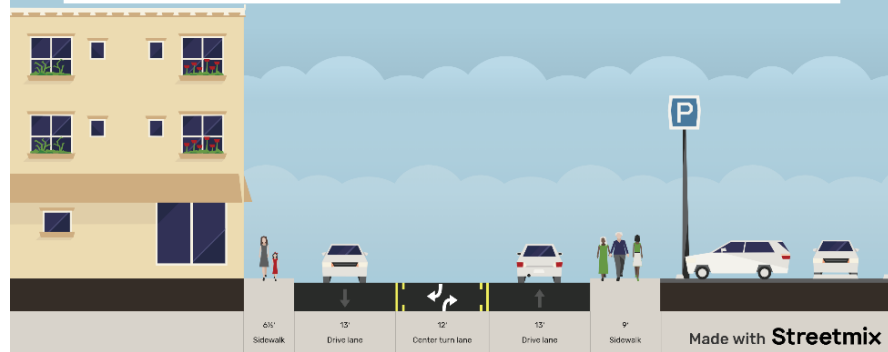


ALTERNATIVE #4

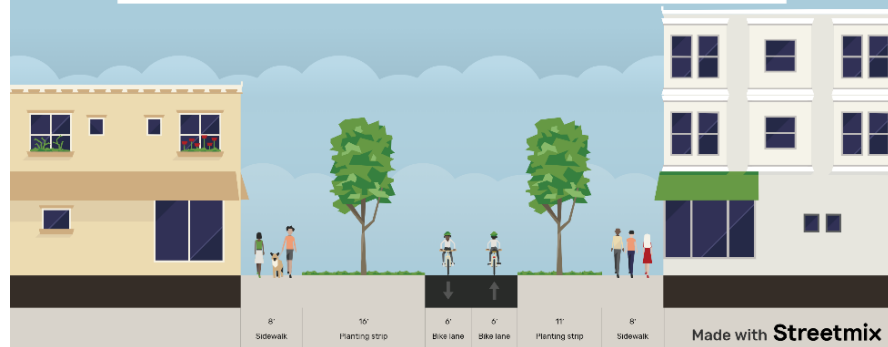
Partial Closure

- Two-way operation on 24th Street
 - Consolidated transit/vehicular operations
- Partial closure of 25th Street/24th Avenue
 - Linear parks
 - Enhanced bicycle/pedestrian environments

24th Street - Two-Way Conversion



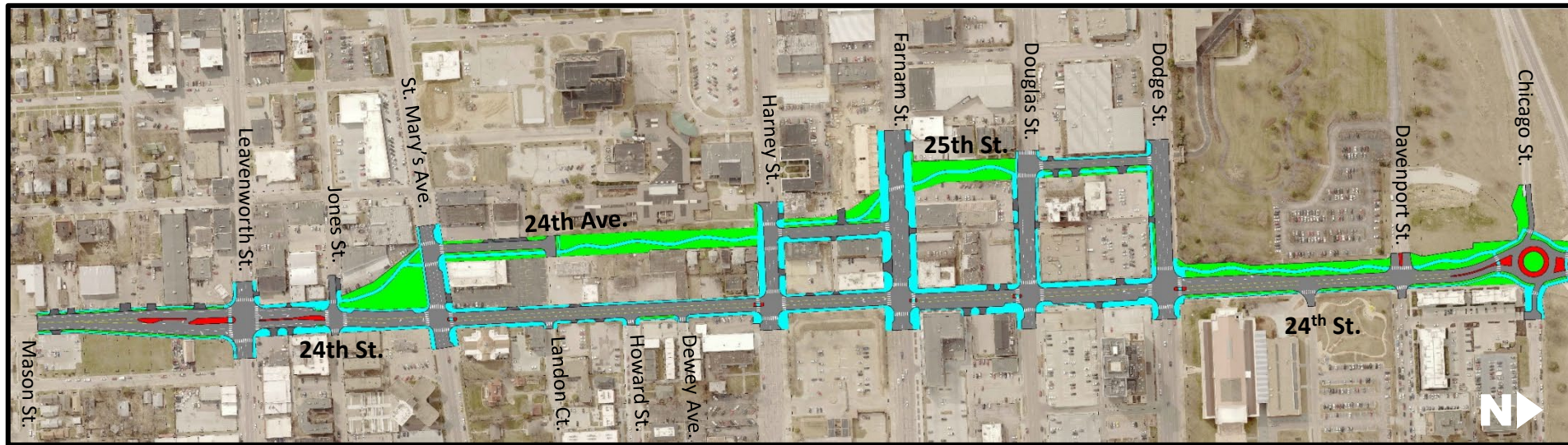
24th Avenue - Partial Closure



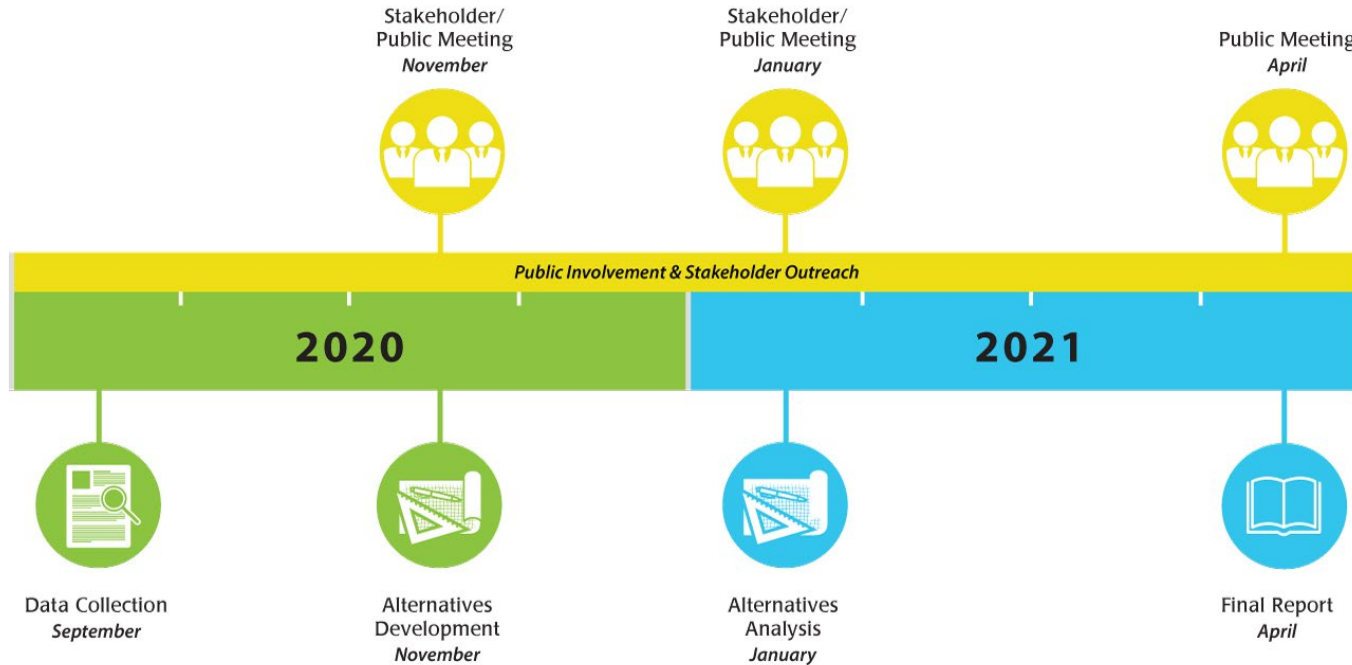


ALTERNATIVE #4

Partial Closure



PROJECT SCHEDULE & NEXT STEPS



WE WANT YOUR INPUT!

Opportunities for Input

- [Complete the survey](#)
- [Email us](#)

Contact Us

Jamie Winterstein, PE

Project Manager, City of Omaha

402-444-3390

Jamie.Winterstein@cityofomaha.org

