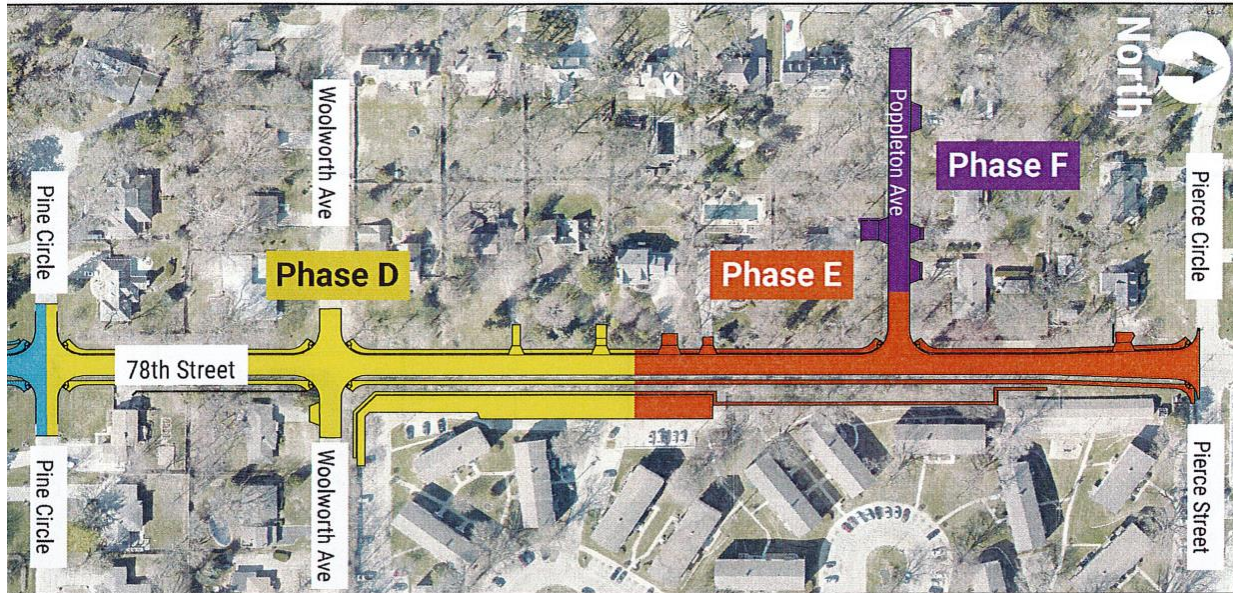


# 78TH STREET IMPROVEMENTS • MERCY ROAD TO PACIFIC STREET

## 78TH STREET PROJECT PHASING

Updated 6-29-2021



**Phase D** – Due to recent rains, the closure of the intersection of Woolworth Avenue and 78<sup>th</sup> Street will now begin Tuesday, July 6, 2021. Removals and the start of Phase D will begin in/around July 6<sup>th</sup>. Resident driveways affected inside Phase D will park their vehicles on the south end of the new Phase E pavement. A temporary walking path will also be provided to homes affected.

**Phase E** – Work continues to progress inside this phase and will be substantially complete by mid-July with exception to seeding /sodding and miscellaneous items. Residents currently affected in Phase E will begin to have access to their properties once again by no later than June 30<sup>th</sup>.

**Phase F** - Poppleton Avenue west of 78<sup>th</sup> Street – Completed in 2020