

## Welcome!




The purpose of today’s meeting is to discuss proposed improvements to 180<sup>th</sup> Street, answer questions and receive input.

### Project Background

180<sup>th</sup> Street between Arbor and Harney Streets is an important transportation corridor in west Omaha. This area currently experiences traffic congestion during peak travel times due to the roadway carrying daily traffic volumes beyond its originally intended capacity.

This project will improve traffic operations and safety for all transportation system users by reconstructing 180<sup>th</sup> Street between Arbor and Harney Streets to a four-lane roadway, divided by a median. The project will also include improvements to intersections, storm sewers, sidewalks, ADA curb ramps, and a multi-use path.

This project will:

-  Add lanes to improve capacity
-  Improve safety
-  Enhance pedestrian facilities



**Current  
Daily  
Traffic**

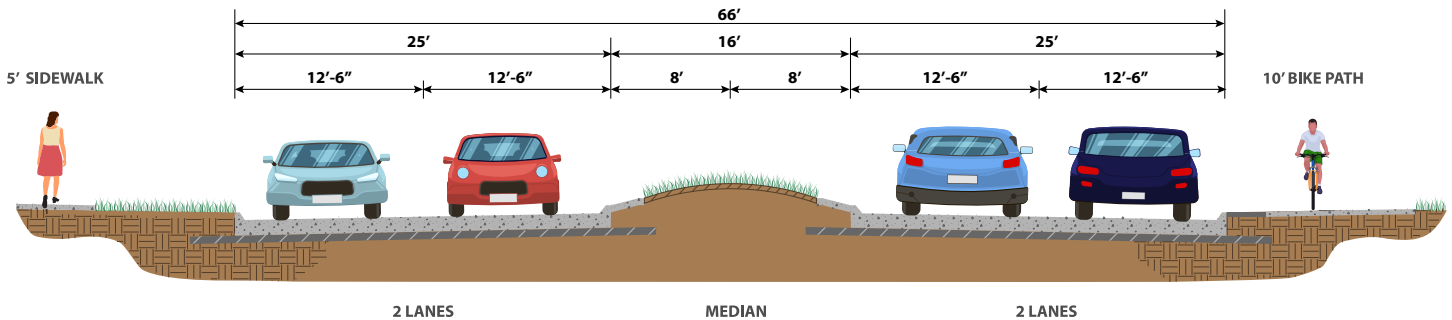


**24,000**  
vehicles

# Roadway Improvements

This project is anticipated to include the following changes:

- Street widening and median additions
- Bike and pedestrian paths, connecting to existing trail infrastructure
- Drainage moved from ditches to underground
- Intersection expansions



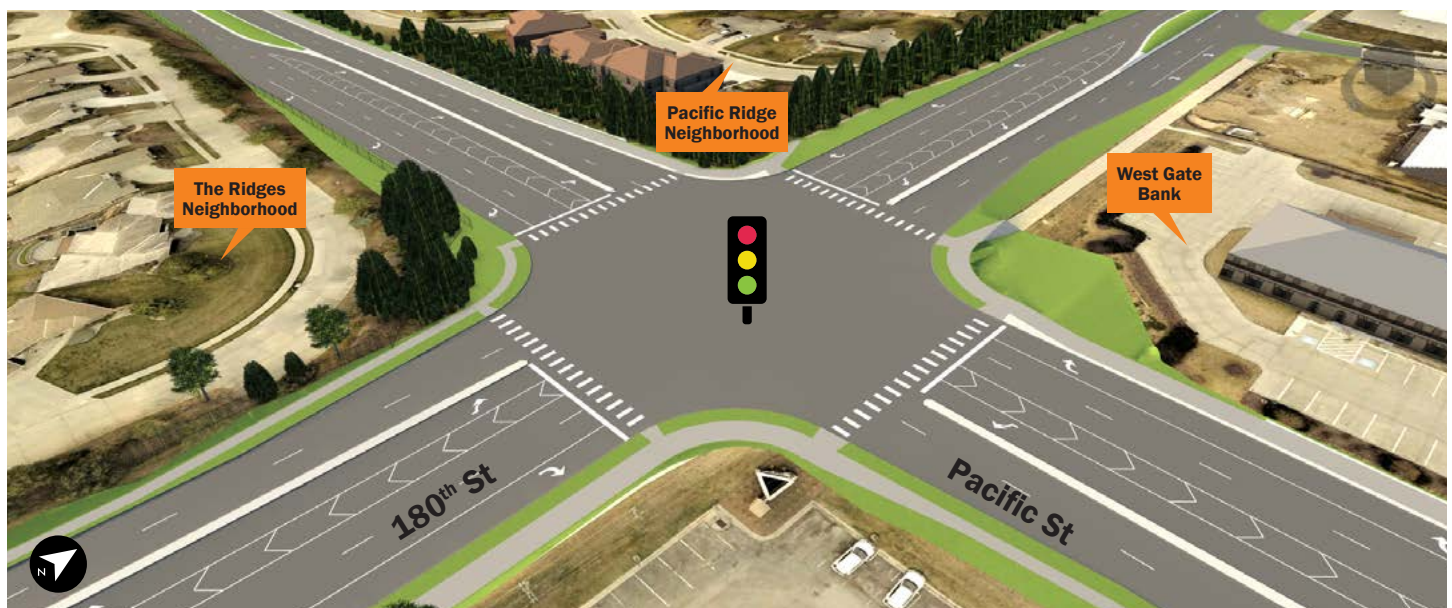
This graphic illustrates the anticipated design of the traffic lanes, raised median, sidewalk, and bike path. Similar completed efforts can be found on 168<sup>th</sup> Street from Dodge to Maple Streets and on Blondo Street from 144<sup>th</sup> to 156<sup>th</sup> Streets.

# Intersection Improvements

## 180<sup>th</sup> and Pacific

This intersection experiences high daily traffic counts and drivers often experience delays. The intersection will be expanded to significantly improve the flow of traffic through this area. Changes include:

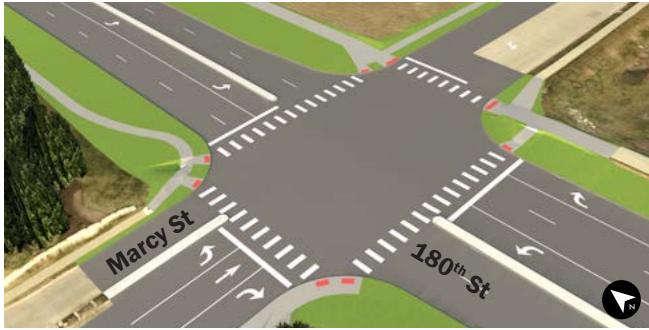
- Dual left-turn lane capability in all directions
- Dedicated right-turn lanes in all directions
- Two through lanes in all directions



## 180<sup>th</sup> and Marcy

Improvements at this intersection include:

- The addition of an eastbound, right-turn lane
- The addition of a westbound, right-turn lane



## 180<sup>th</sup> and Shadow Ridge

Improvements at this intersection include:

- The addition of left-turn lanes to improve sight lines for drivers
- **We want your input** – will a 5' wide sidewalk be used on west side of 180th between Shadow Ridge and Pacific?



## Frances and 181<sup>st</sup>

Improvements at this intersection include:

- Access at 181<sup>st</sup> Street changes to right-in/right-out to improve safety
- Multi-use path features



## Pacific and 178<sup>th</sup>

Improvements at this intersection include:

- Dedicated left-turn lanes in each direction
- Median removal on south side to improve sight lines for drivers



## Frequently Asked Questions

### When will construction begin? How long will it take?

Construction is tentatively scheduled to begin in 2025 and continue through 2026. However, this schedule is subject to change. Currently, the project is in preliminary design; final design and many other activities need to take place before construction can begin. There will be a pre-construction public open house held before construction activities begin.

### Will the City need to acquire additional right of way or easements for this project?

The City may need to acquire additional right of way and temporary or permanent easements to complete this project. The project team works to minimize impacts to right-of-way and the need for easements while still achieving project goals. Discussions about right-of-way or easements would tentatively take place in 2023 through 2024.

### Are noise walls being considered?

This project will not include dedicated noise walls. This was determined after a noise analysis was completed. However, some retaining walls and other elements may be included in specific areas along the corridor.

### Where will the bike path be installed?

The 10-foot wide path is anticipated to be located on the east side of 180th Street and the north side of Pacific Street. These locations will enhance connections to schools, parks and existing trail facilities in the area.

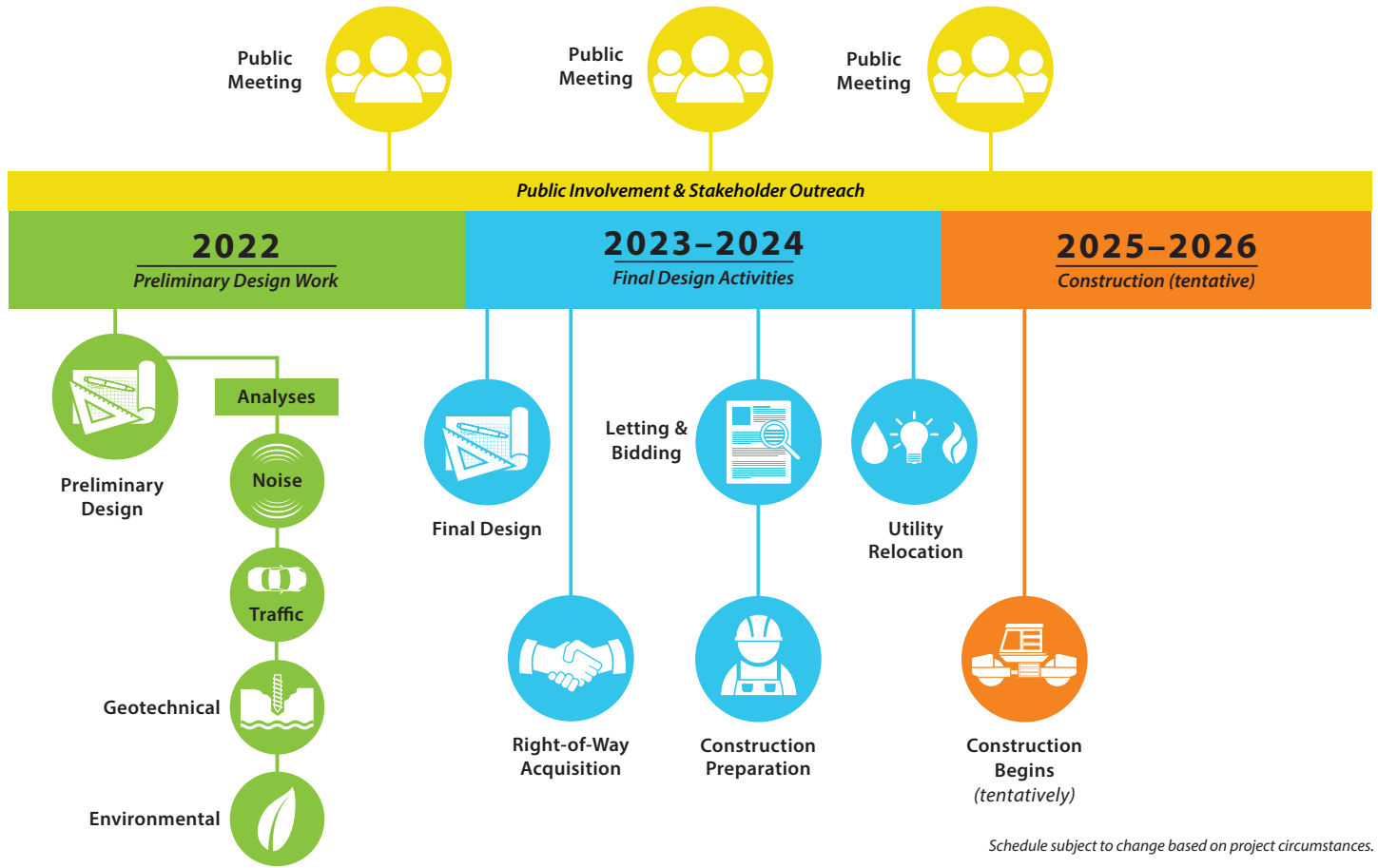
### I have a concern. How can I inform the Project team?

We value your input and encourage you to speak with a project representative at tonight's meeting. Comment forms are also available. Comments and questions can also be submitted at anytime throughout the project by emailing [info@KeepOmahaMoving.com](mailto:info@KeepOmahaMoving.com).



# Project Schedule

The 180<sup>th</sup> Street project is currently in the preliminary design phase. There will be two more public and stakeholder engagement opportunities before construction begins. Construction is tentatively scheduled to begin in 2025.



## We want your input!

There are several ways you can provide input or ask questions:



Complete a comment form tonight or access one online



Email us:  
[info@KeepOmahaMoving.com](mailto:info@KeepOmahaMoving.com)



Speak with a project representative

### City Project Manager

David Nassi, PE, Civil Engineer  
City of Omaha Public Works  
[david.nassi@cityofomaha.org](mailto:david.nassi@cityofomaha.org)  
(402) 444-5466



For more information on this project, to review materials from today, or to comment online, please visit [KeepOmahaMoving.com](http://KeepOmahaMoving.com)

City of Omaha  
1819 Farnam St.  
Omaha, NE 68183

