

Welcome!

The purpose of today's meeting is to present the study's purpose, alternatives, answer questions and receive your input.

Study Purpose:

The update of this study will revisit enhancing safety for all users, including pedestrians, bicyclists, transit riders, drivers, and industrial traffic in the city existing right-of-way.

Outcome:

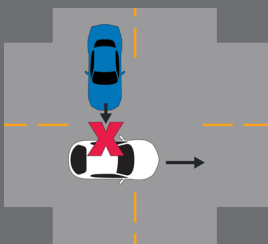
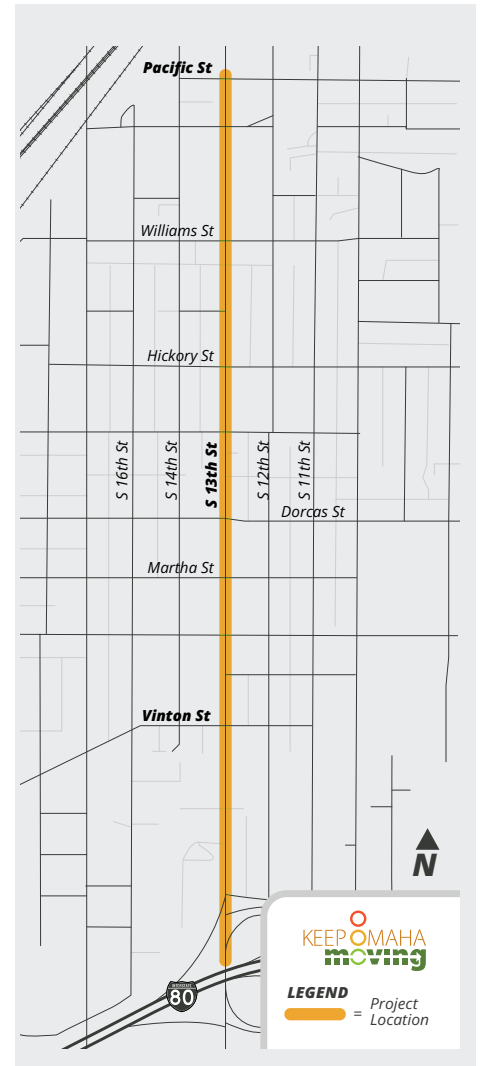
Short term (up to three years) and medium term (three - five years) traffic safety improvements making 13th Street safer and more accessible for everyone.

Traffic Projections:

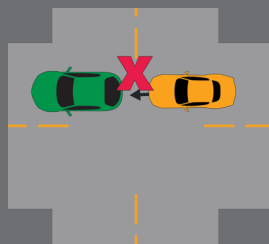
- Over 80% of all trips are commuters and freight passing through the corridor, rather than being generated by local residents or businesses.
- Traffic is growing at a slower rate along 13th Street as compared to historical trends, likely due to changes in regional travel patterns.
- Some local growth is expected but that will not offset the total decrease in regional traffic, leading to a decrease in the traffic projections through 2050.

Crash trends from the past 6 years (2019-2024):

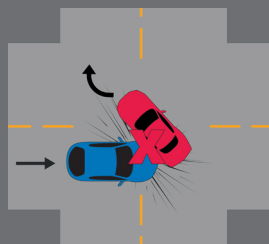
- 427 crashes have taken place along 13th Street from 2019 - 2024.
- Angle crashes are the most common crash type.
- Pedestrian and angle crashes make up most serious injuries and fatalities.
- In the last six years, two people have died in crashes, 148 people have been injured, and among those 20 were incapacitating injuries.



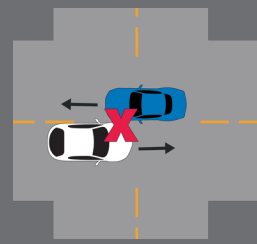
Angle Crashes
146 Total



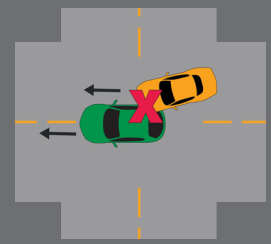
Rear-end Crashes
89 Total



Left Turn Crashes
55 Total



Sideswipe (Opposing)
10 Total



Sideswipe (Same)
34 Total

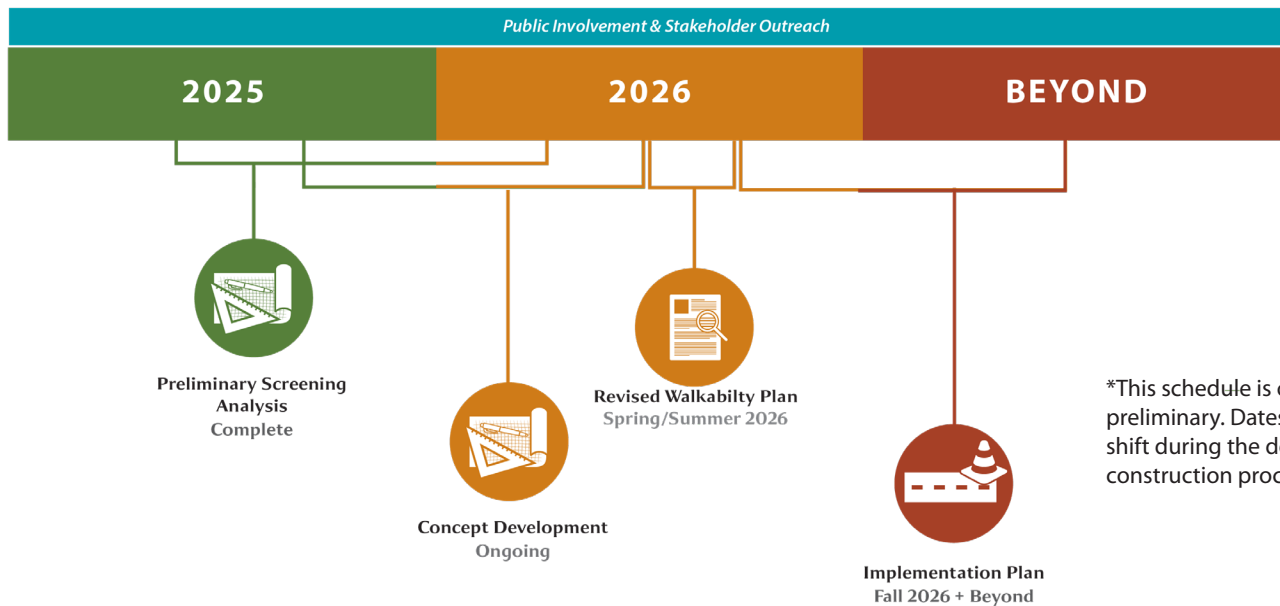
Public Engagement



What we have heard so far

- Corridor changes must support **safe coexistence** of industrial loading, pedestrians, and businesses.
- Trucks, loading activity, and event-related business activity create **conflict points** due to **limited visibility and shared space**.
- **Sidewalks**, especially on the south side, are **narrow, damaged, or missing**, forcing pedestrians into the street.
- **Pedestrian safety** is the **top priority** for corridor improvements.
- **Cars dominate travel**, while biking feels unsafe and busses are rarely used.
- **Poor visibility at intersections** causes people to avoid crossings.
- **Speeding and crashes** are major concerns.

Project Schedule*



We want your input!

There are several opportunities to provide input or ask questions of the Project team:



Complete a comment form at today's meeting



Email us: info@KeepOmahaMoving.com

Please visit KeepOmahaMoving.com for more information on this Project, to review materials from today, or to comment online.

City of Omaha
1819 Farnam St.
Omaha, NE 6818

